

SEKTION FOR MIKROBIOLOGI

SEKTION FOR MIKROBIOLOGI



Kasper Kjeldsen
(Sektionsleder)



Lars Peter
Nielsen



Andreas
Schramm



Tina
Šantl-Temkiv



Klaus Koren



Niels Peter
Revsbech



Kai Finster



Ugo Marzocchi



Bo Barker
Jørgensen



Hans Røy



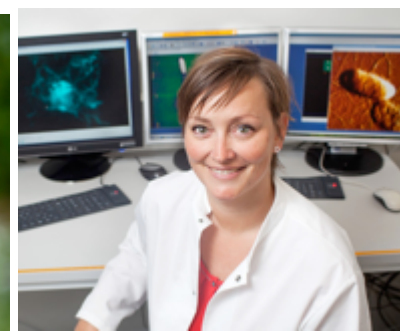
Bente Lomstein



Ian Marshall

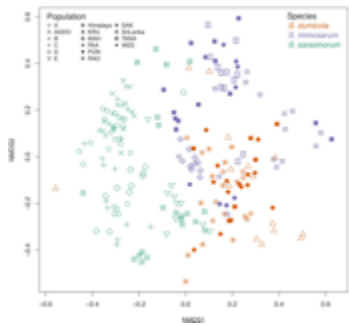


Lars Riis
Damgaard



Rikke Meyer

MIKROBIOLOGI



Økologi

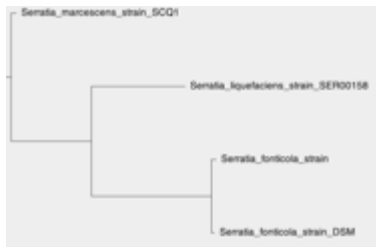
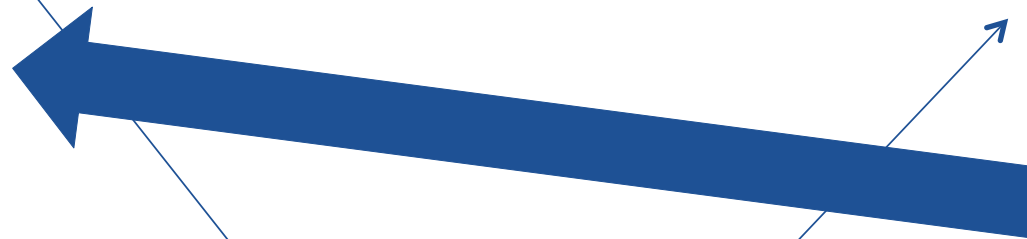
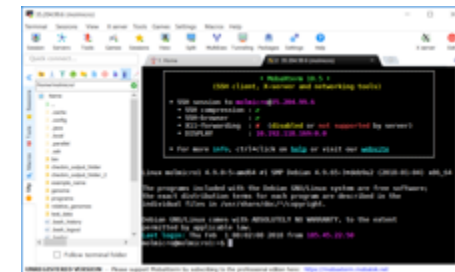
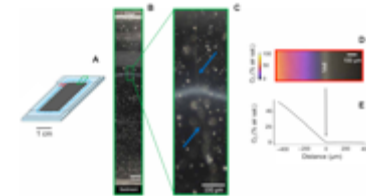
Felt

Evolution

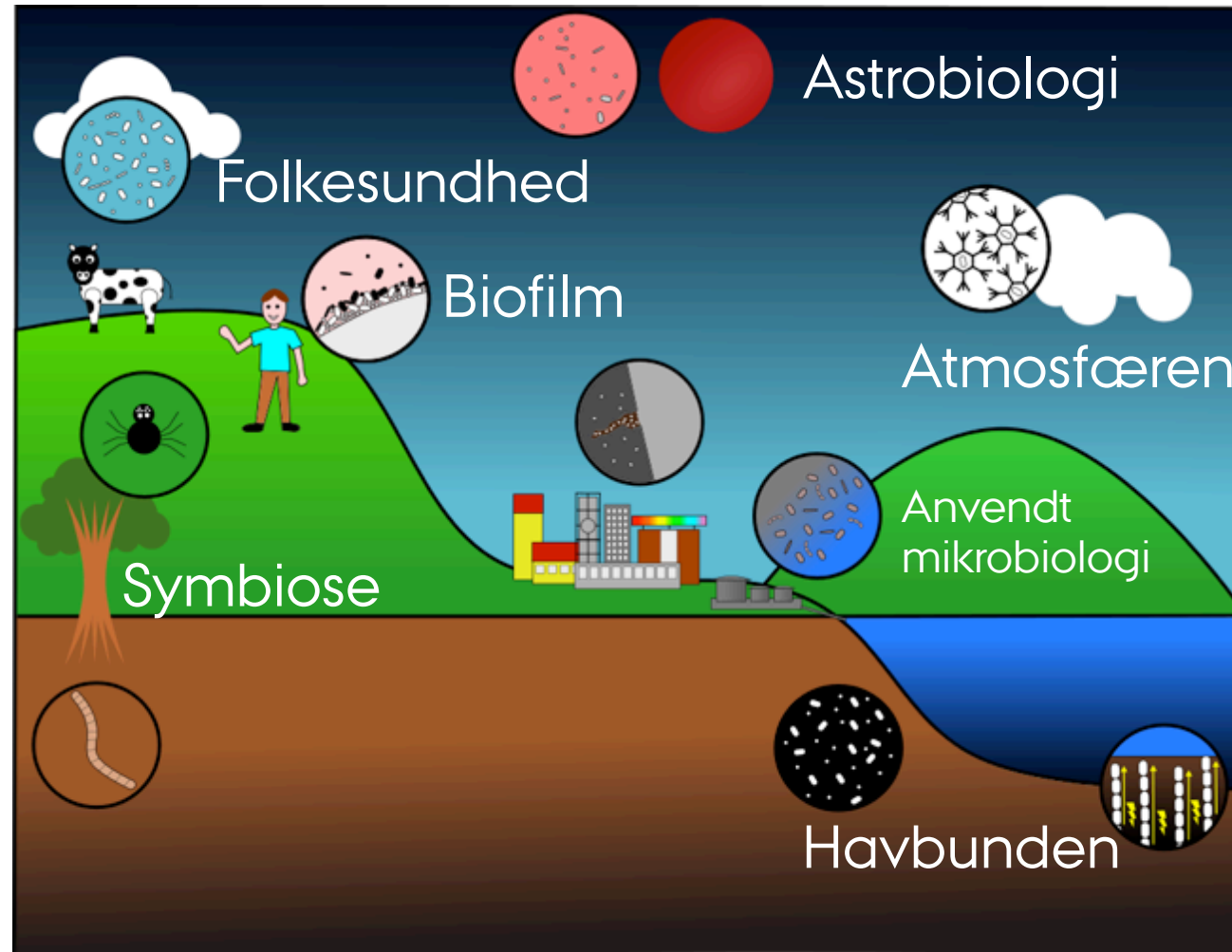
Fysiologi

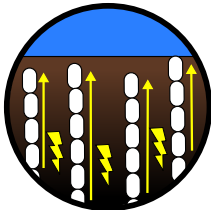
Laboratorie

Computer

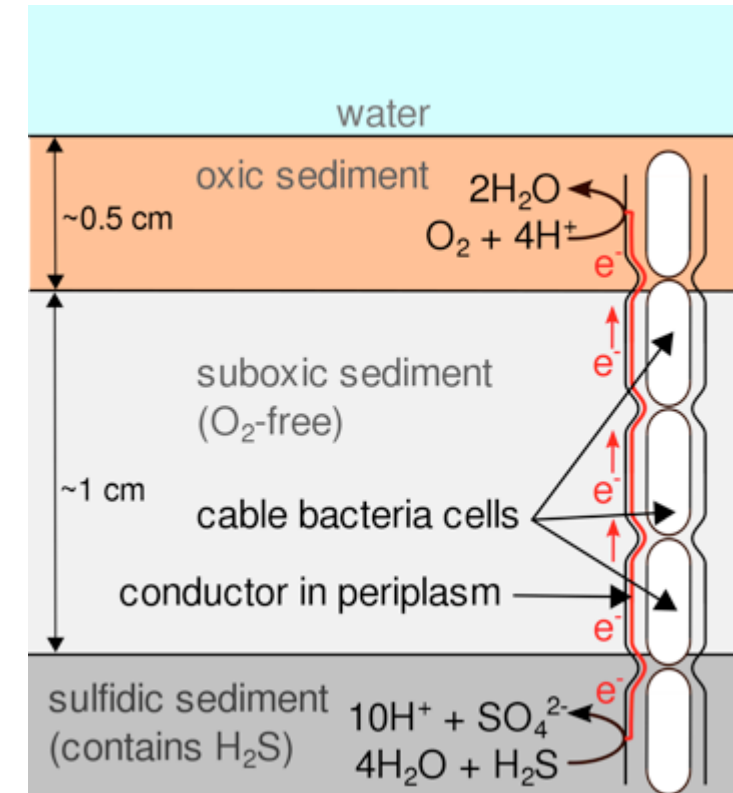


MIKROORGANISMER I MANGE SAMMENHÆNGE

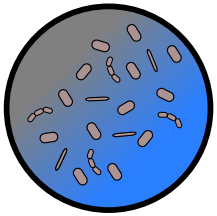




KABELBAKTERIER



<https://cem.au.dk>

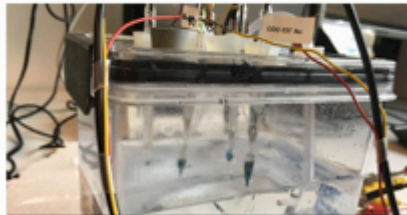


WATEC (WATER TECHNOLOGY CENTER)

Sensor development and applications



Optical sensors



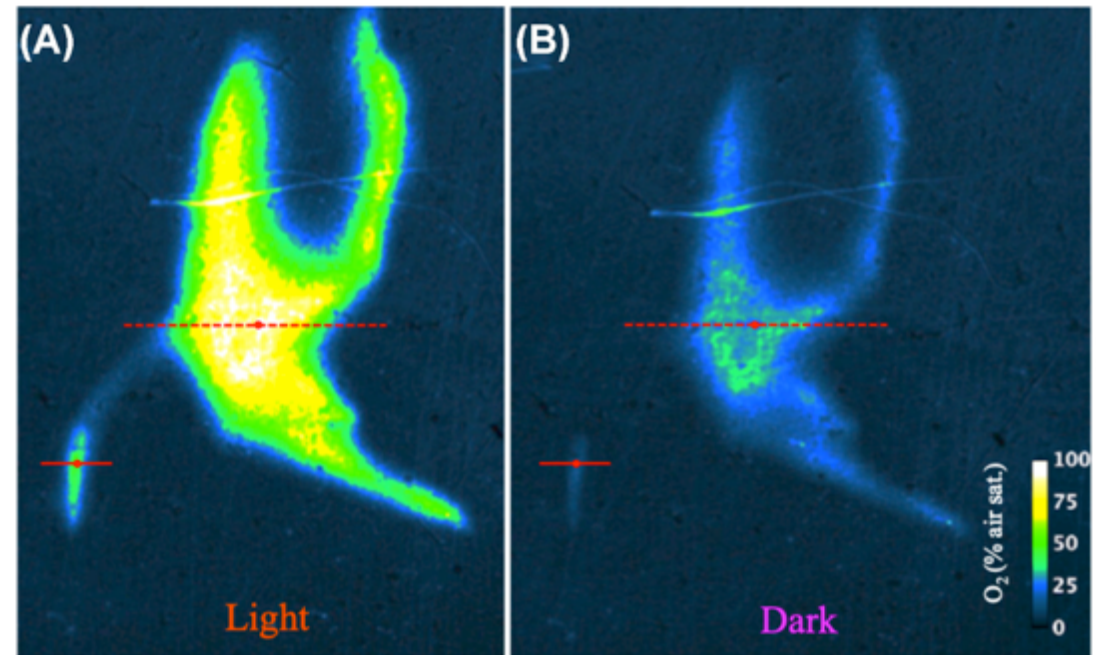
Microsensors



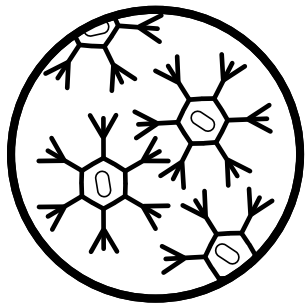
POUL DUE JENSEN / GRUNDFOS
FOUNDATION

About the Poul Due Jensen
Foundation - 40 Mio. DKK
Grant

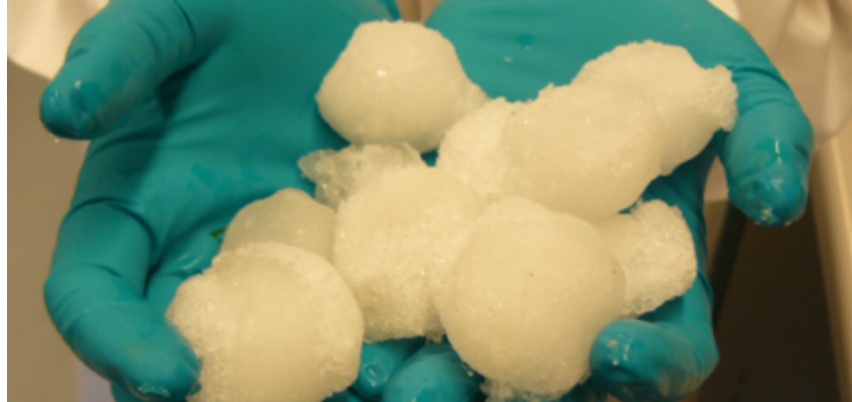
Contact



<https://watec.au.dk/research/sensor-development-and-applications/>



AEROMIKROBIOLOGI



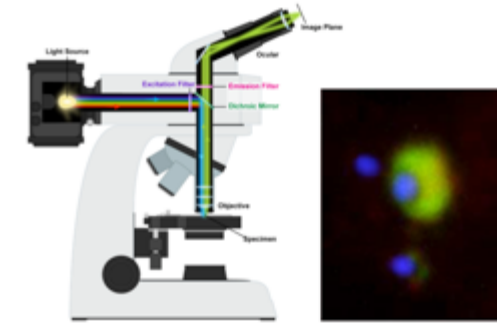
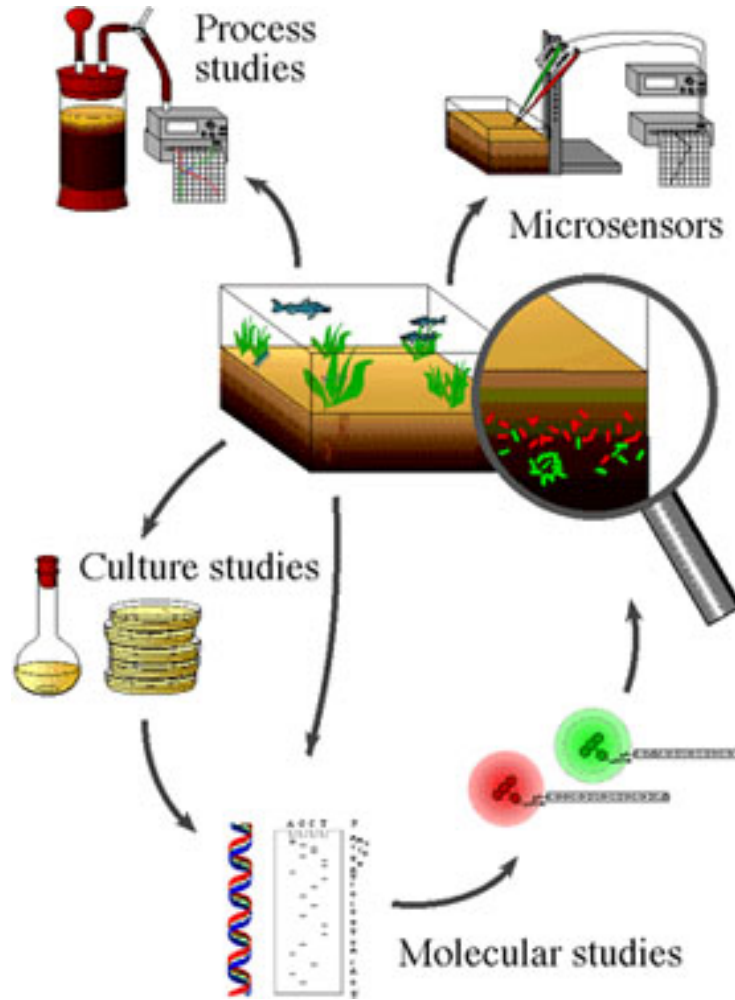
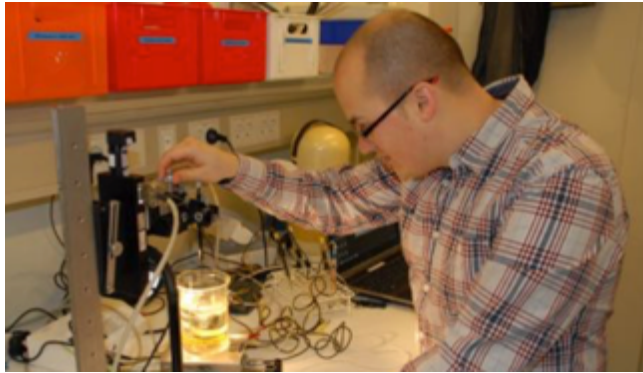
DKK 15 million from Novo for research in the clouds

The Novo Nordisk Foundation has granted DKK 15 million from its interdisciplinary synergy programme to project DRAMA. With researchers from both Nat and Tech, the project will decipher the role of atmospheric microbial aerosols for cloud formation.

2020.09.18 | [PETER F. GAMMELBY](#)



METODER I MIKROBIOLOGI



ANBEFALEDE FAG FOR PROJEKTER HOS OS

Bachelor

Mikrobiologi for biologer

Mikrobiel Fysiologi og Identifikation

Mikrobiel Økologi

Kandidat

Mikrobiel Stofomsætning og Populationsøkologi

Molekylær Mikrobiologi

En specialisering inden for mikrobiologi åbner for mange forskellige karriereveje i både den offentlige og den private sektor.

Alumni karrierer

- Biologisk rådgivning og R&D indenfor miljø, industri, og landbrug
- Miljø- og bioteknologi
- Miljø- og naturforvaltning
- Hospitaler og medico-industri
- Undervisning
- Forskning



Aarhus Universitetshospital

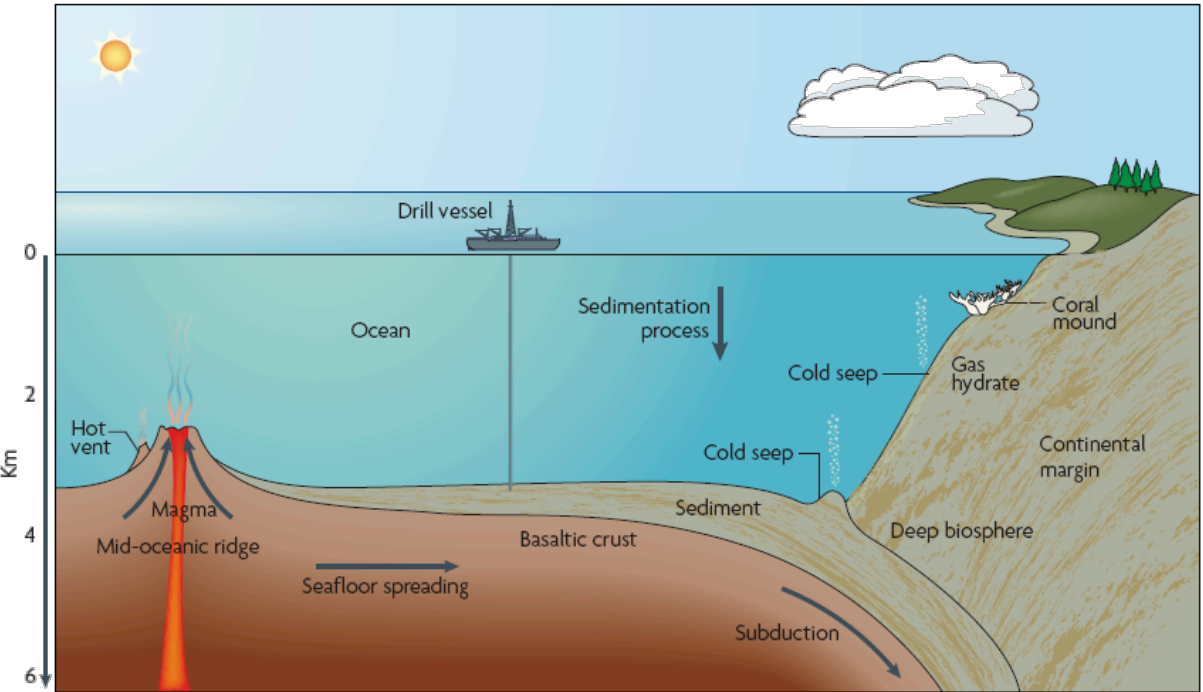


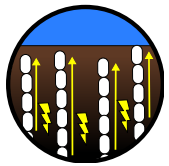
Miljø- og Fødevareministeriet



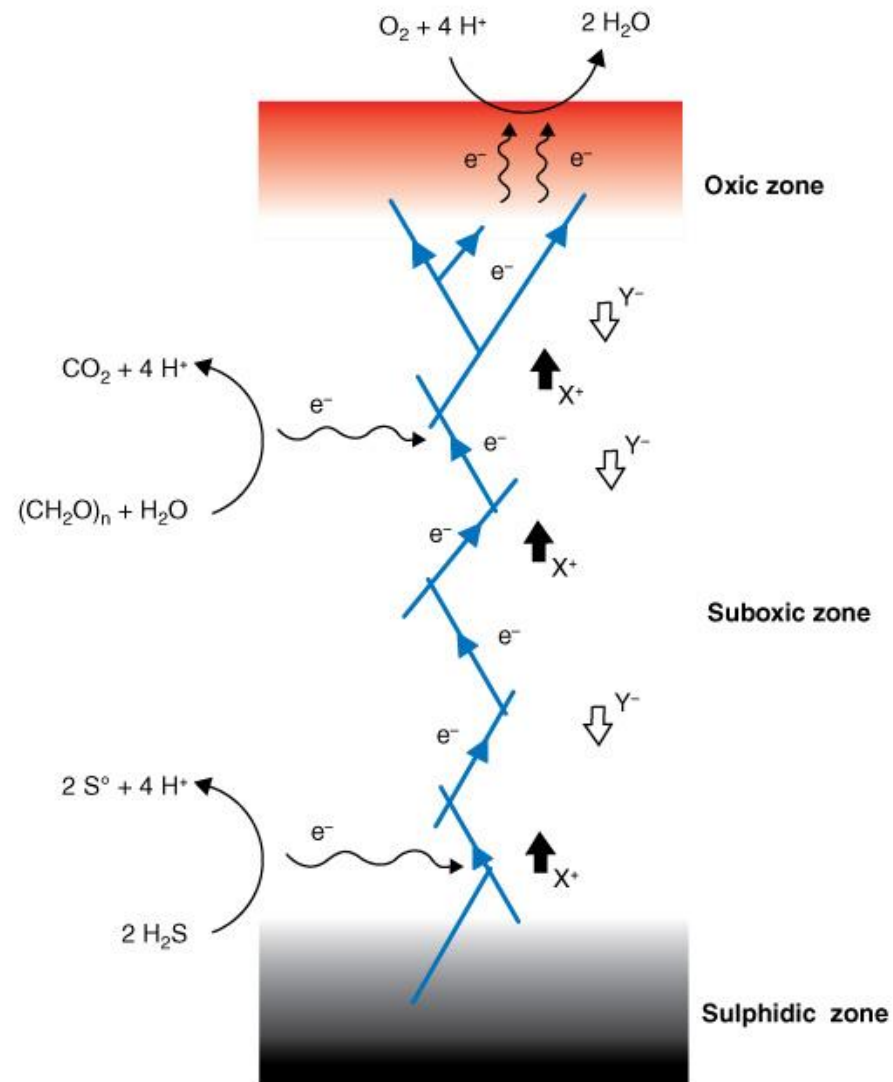
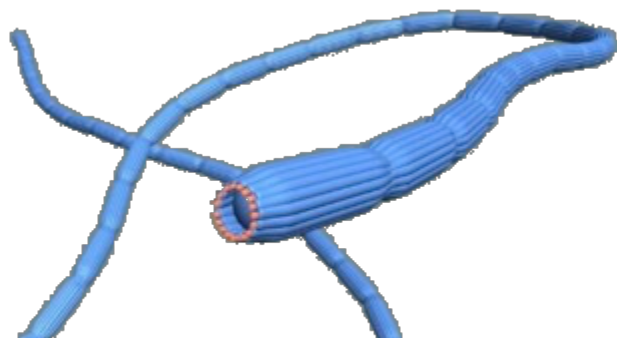
AARHUS
UNIVERSITY

HAVBUNDEN



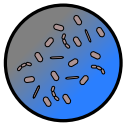


KABELBAKTERIER



 CEM CENTER FOR ELECTROMICROBIOLOGY

www.cem.au.dk

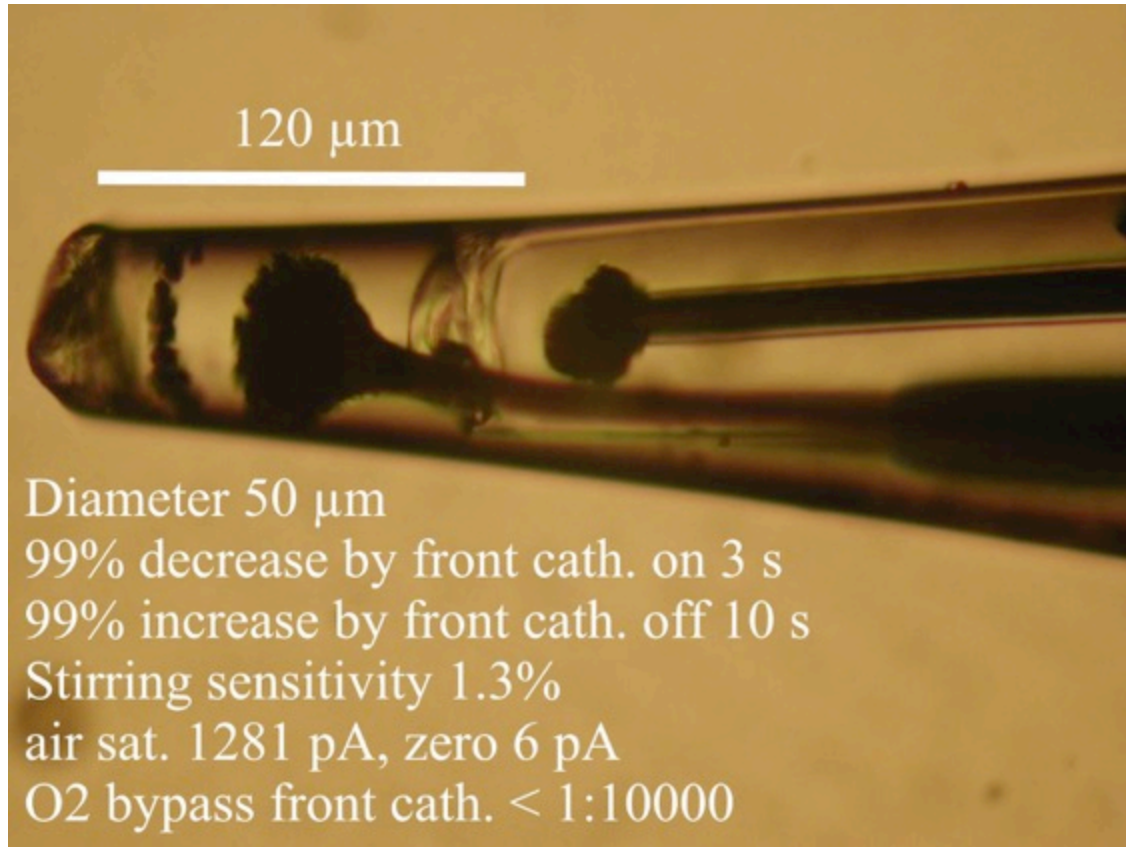


ANVENDT MIKROBIOLOGI

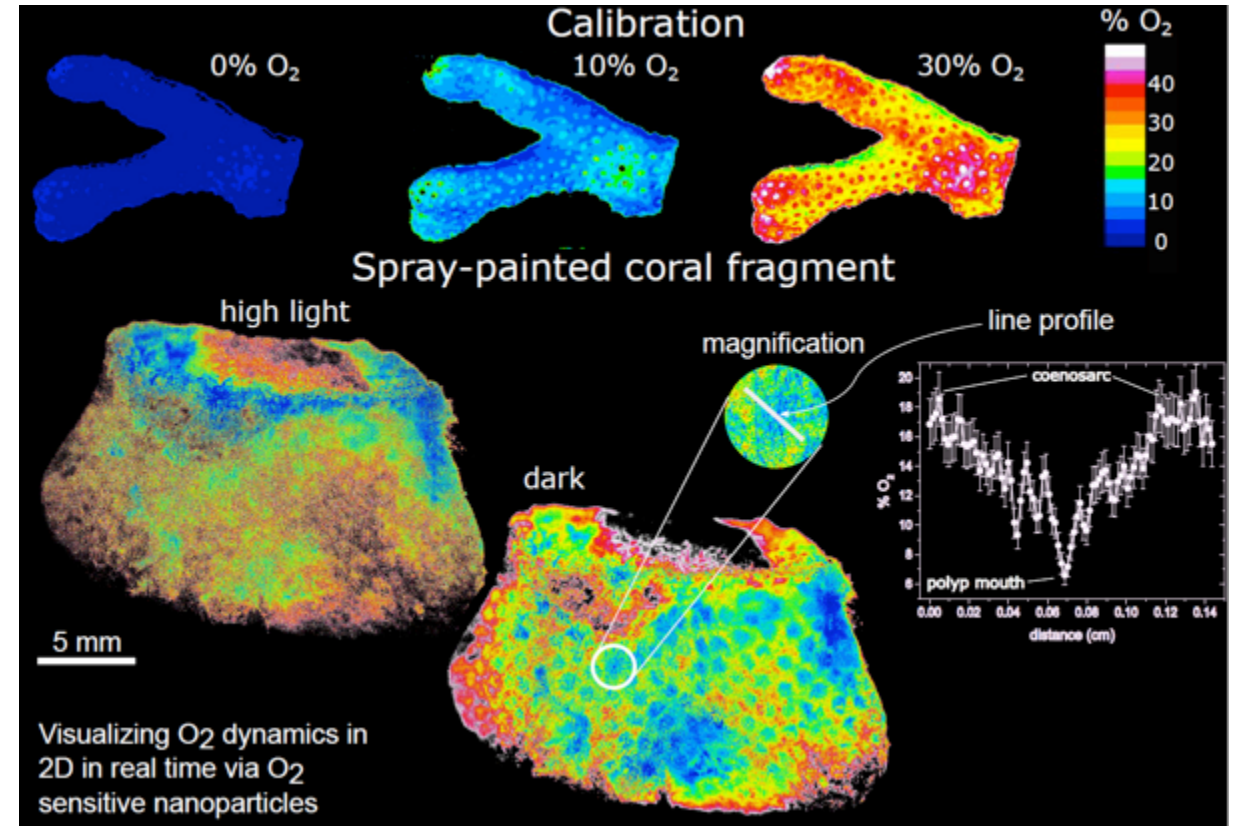


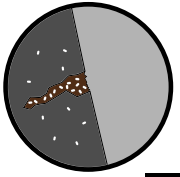
<http://watec.au.dk/>

STOX sensor kan måle helt ned til $< 5 \text{ nM O}_2$

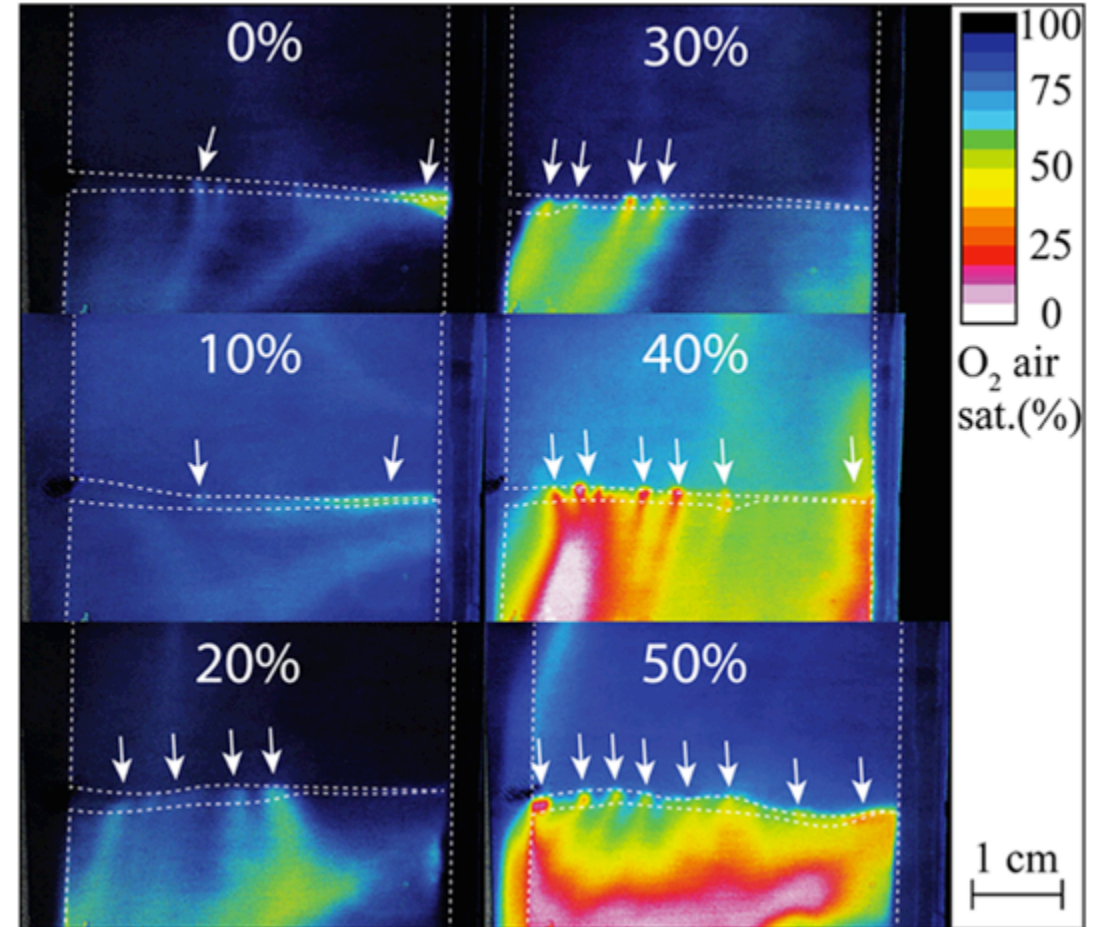
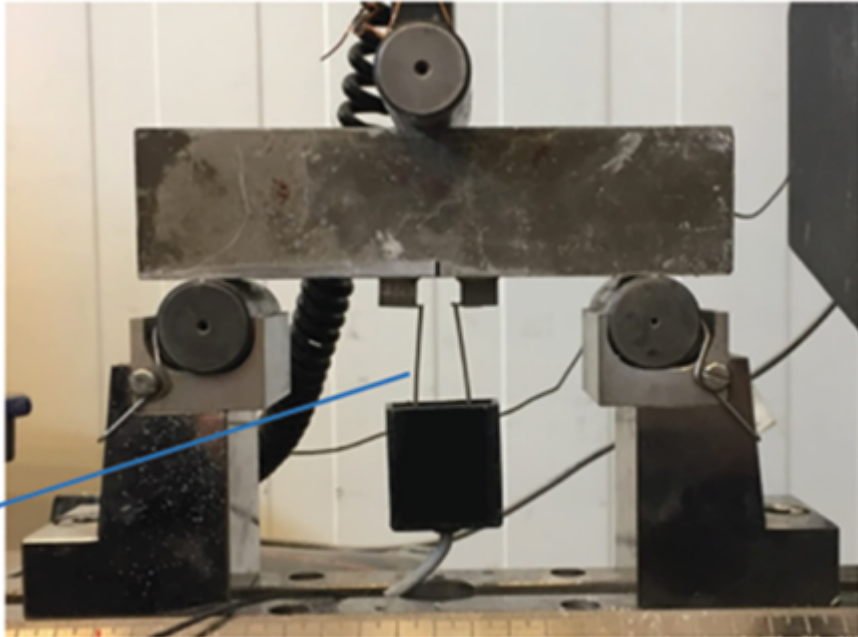


2D optoder

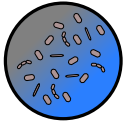




SELVHELENDE CEMENT

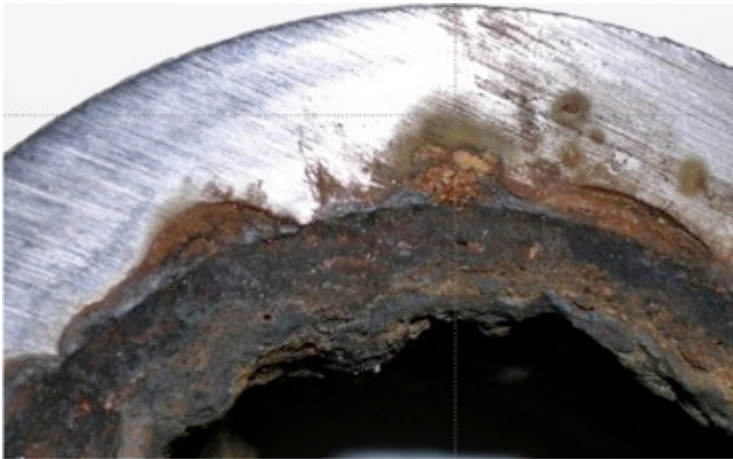


[10.1021/acsomega.9b02541](https://doi.org/10.1021/acsomega.9b02541)



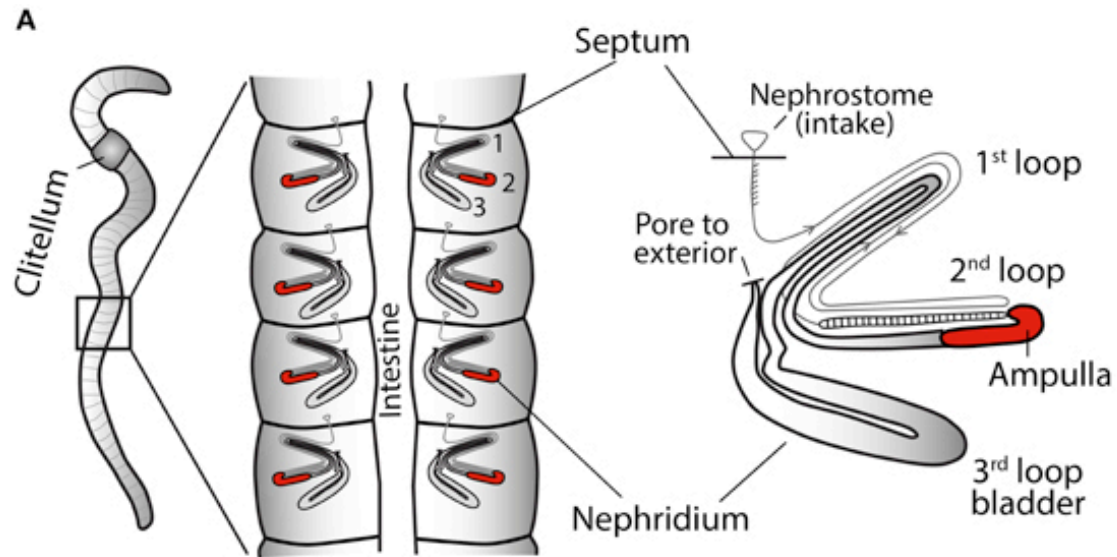
ANVENDT MIKROBIOLOGI

Control af microbial corrosion, H_2S production and concrete healing in off-shore oil production

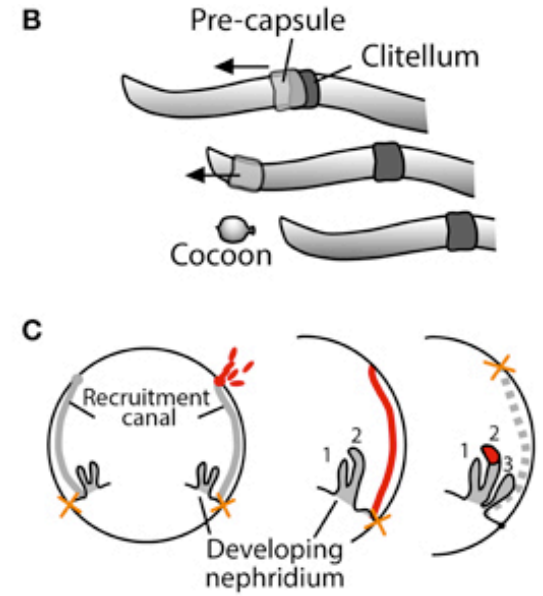


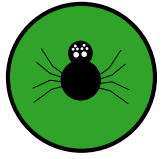


SYMBIOSE

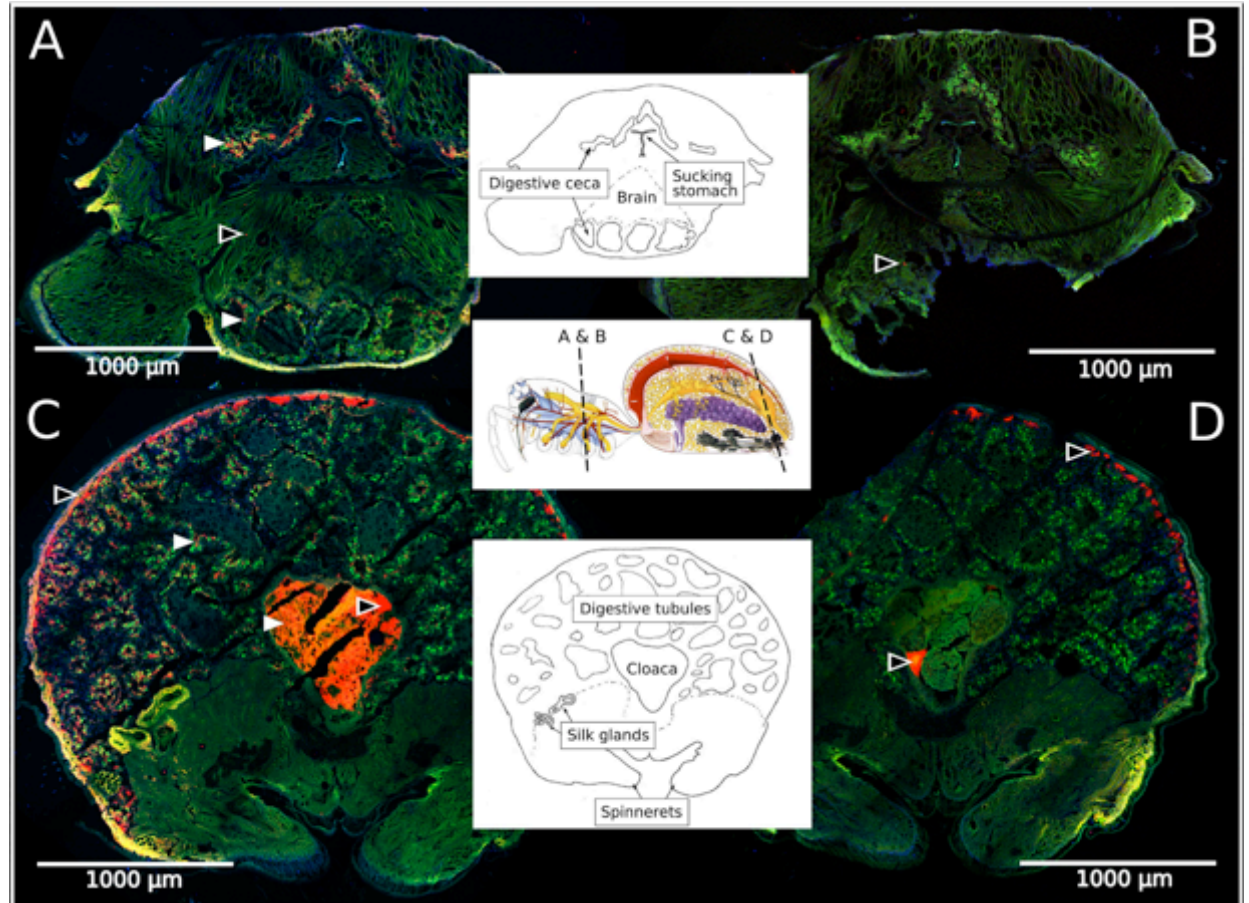


10.3389/fmicb.2014.00128





SOCIALE EDDERKOPPER

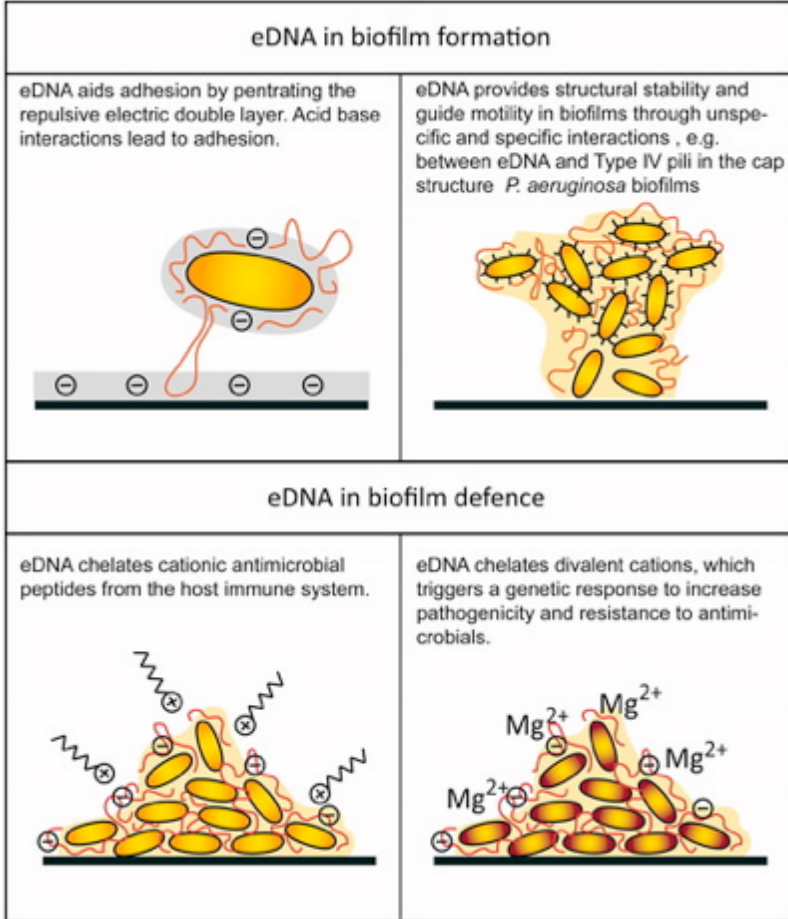


[10.3389/fmicb.2020.01845](https://doi.org/10.3389/fmicb.2020.01845)

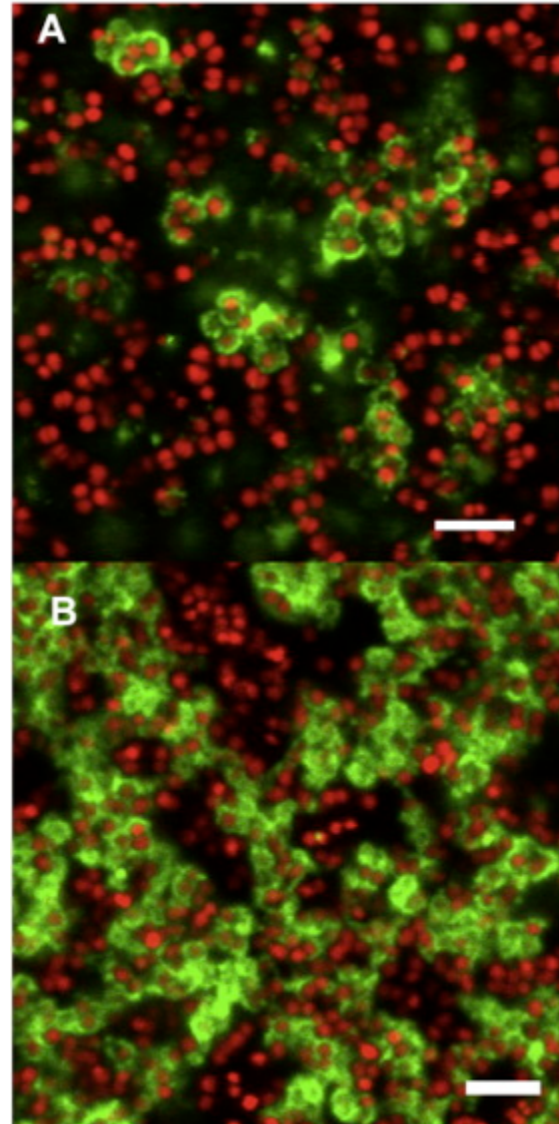
[https://en.wikipedia.org/wiki/Stegodyphus_dumicola#/media/File:Colonial_Spiders_\(Stegodyphus_dumicola\)_nest_\(6607340075\).jpg](https://en.wikipedia.org/wiki/Stegodyphus_dumicola#/media/File:Colonial_Spiders_(Stegodyphus_dumicola)_nest_(6607340075).jpg)



BIOFILM



10.3109/1040841X.2013.841639

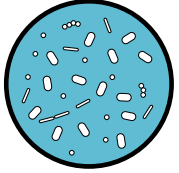


[10.1016/j.jmimet.2016.03.002](https://doi.org/10.1016/j.jmimet.2016.03.002)



Institut for Odontologi og Oral Sundhed

FOLKESUNDHED OG LUFTBÅRNE BAKTERIER



10.3389/fmicb.2018.00870Pig

Season

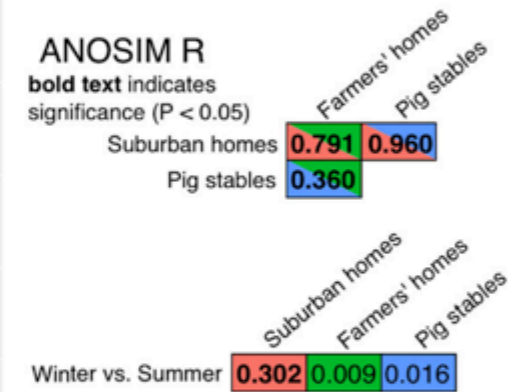
- Summer
- ▲ Winter

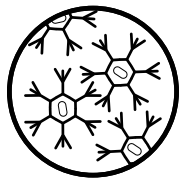
Location

- Suburban home
- Farmer's home
- Pig stable

ANOSIM R

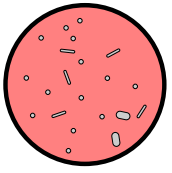
bold text indicates significance ($P < 0.05$)





AEROMIKROBIOLOGI





ASTROMIKROBIOLOGI

