

STAY RELEVANT

CASE COMPETITION

COMPANY:

NAME AND ADDRESS OF COMPANY

Name:	Glasmuseet Ebeltoft
Address:	Strandvejen 8, DK-8400 Ebeltoft
Web:	https://glasmuseet.dk/?lang=en

CONTACT(S)

Name:	Mikkel Elming	Name:	Sandra Blach
Title:	CEO	Title:	Exhibition Officer
Tel.:	+45 42545250	Tel.:	+45 48806460
Email:	me@glasmuseet.dk	Email:	sfb@glasmuseet.dk

COMPANY DESCRIPTION

Glasmuseet Ebeltoft is an active and vibrant museum of international glass art and contemporary art. The museum's collection includes approx. 1,600 works by 700 artists from 52 countries.

Throughout the year, the museum has temporary exhibitions of new and established artists in addition to displaying a selection of masterpieces from the collection. In the garden, you will find the museum's glass workshop where you can experience the magic of the old craftsmanship.

As the only museum in its field in Denmark, Glasmuseet's aim is to display and develop modern glass art. We have an exceptional history as a local initiative with an international outreach established by a community of artistic enthusiasts, passionate business people and courageous politicians. At the time of the inauguration in 1986, the museum was the first in the world to focus solely on modern glass art. Consequently, the museum has held a prominent international position throughout its lifetime. This, along with the museum's unique placement on the waterfront of Ebeltoft, has facilitated the museum's, in many ways, unique development in the context of Danish museums.

The glass museum, which is a private museum, is directed by the Foundation for the Collection of Contemporary, International Glass Art. The museum has approx. 40,000 visitors a year. Her Majesty Queen Margrethe II is a patron of the museum.

THE CHALLENGE

Glasmuseet consists of two buildings. The old building, which is a former customs house designed by Hack Kampman built in 1922, and a modern wing designed by architects 3XN, built in 2006. The customs house is a prominent and stately neo-classical building. It houses galleries, the museum shop, the administration and a storeroom. The modern wing has a contemporary, minimalistic style, and it holds the reception, a café, galleries, a kids corner and storage. In addition, there is a free-standing building in the garden containing our professional glass workshop.

In the coming years, we will implement a carefully prepared refurbishment and renovation of the museum's interior. We will have an overall plan which will explore the possibilities of moving and changing the museum's foyer, shop, café, kids corner and galleries. We would like your input on how to improve and design the physical museum experience of our visitors - from arriving in front of the building, the entrance, the outdoor space in front of the museum, and until visitors leave the museum. In addition, we will do strategic work on our digital expression, but that is not part of this case, which only concerns the physical presentation and experience of the museum.

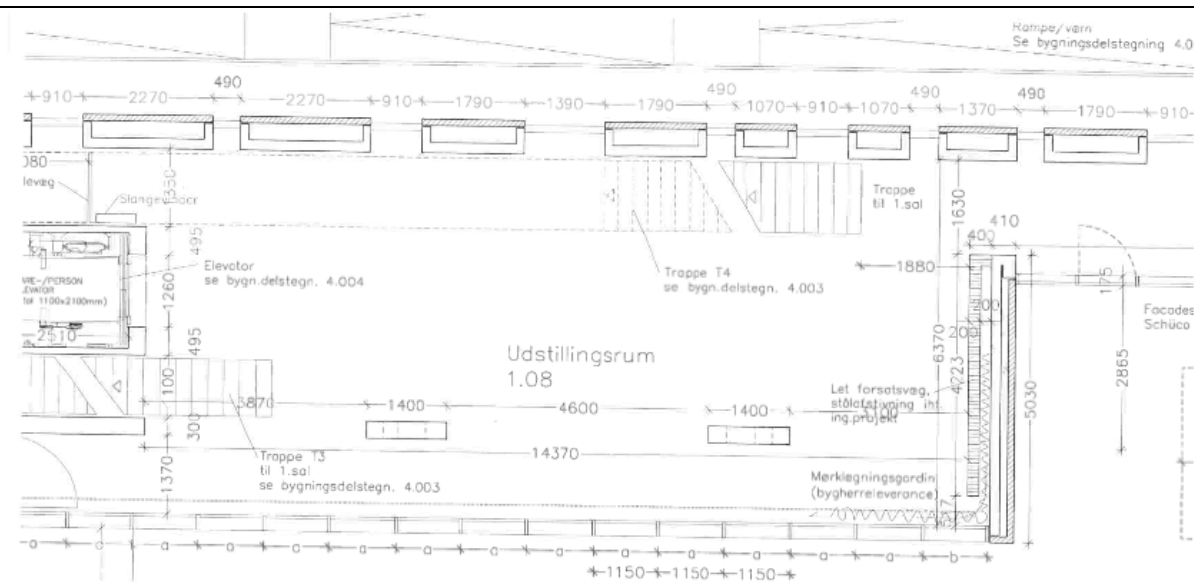
Below, you will find photos of the customs house and the modern wing with and without banners on its façade. You will also find the layouts of the modern wing and the customs house.



The customs house and the modern wing, showing the entrance and the outdoor space in front of the museum, 2006.

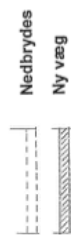
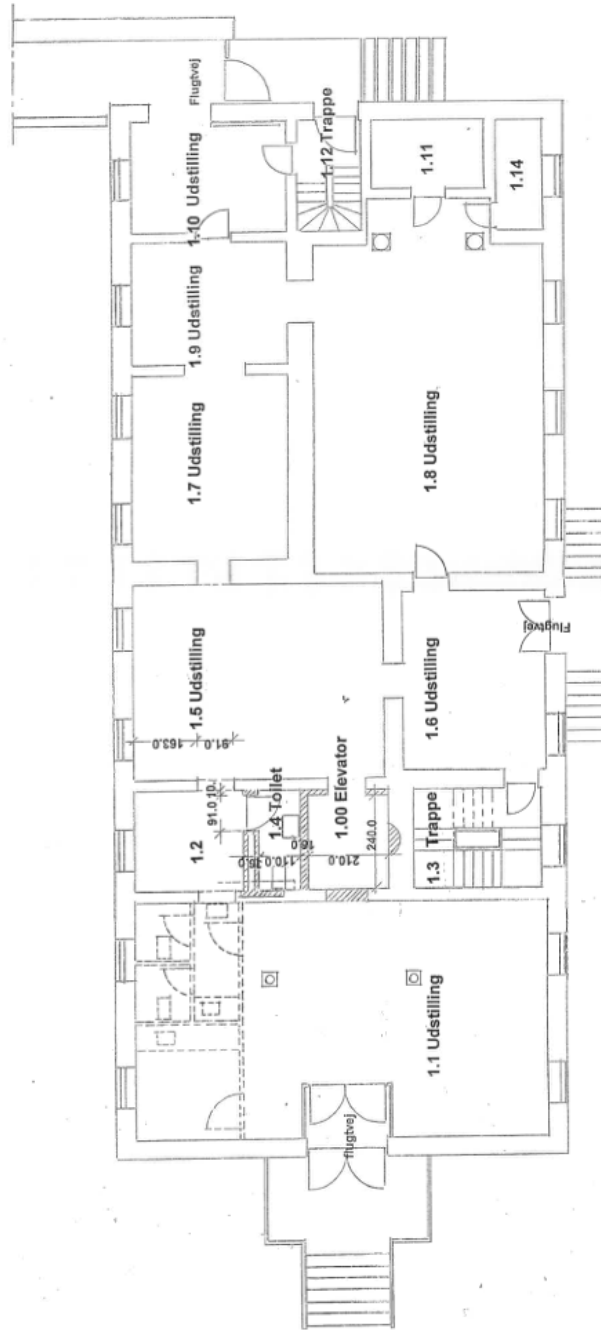


The modern wing and the outdoor space, 2022.



Glasmuseet Ebeltoft							
BYGGERE		Glasmuseet Ebeltoft Strandvejen 8 - 8430 Ebeltoft			TELEFON	TELEFAK	SAGDNR.
ARKTEKT	3 RAMBØLL		33 Thales Allé Kystvejen 17 - 8000 Århus C		87 31 48 48	87 31 48 48	74813
INGENIØR	RAMBØLL		Rambøll Ost Følles Allé 22 - 8200 Århus N		86 44 77 00	86 44 76 25	0468425
HOVEDPROJEKT							
Stueplan							
UCAS	KONTROL	GODK.	FILE	MAL	TEGN. NR.	REV.	
DATA	24.10.2017	24.10.2017	24.10.2017				
NHVN	JSA	CLD	OLD	1:50	1.011		

The modern wing, ground floor.

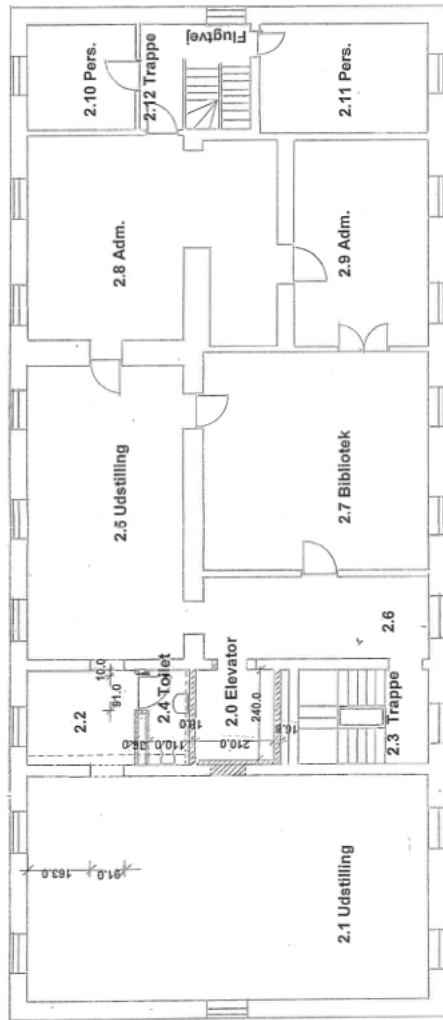


Vægge og døre ved elevator i.h.t gældende brandkrav

Tegn. Nr. 2
Mål 1 : 100
Tegn. Af. PF,
HMT
Dato. 07.08.09
Rev.

Syddjurs Kommune, Hovedgaden 77, 8410 Rønne
Team Ejendomme
 Glasmuseet Ebeltoft, Strandvejen 8, 8400 Ebeltoft
 Etablering af elevator m.v.
 Stueplan

The customs house, ground floor.



--- Nedbrydes

▨ Ny væg

Vægge og døre ved elevator l.h.t. gældende brandkrav

Syddjurs Kommune, Hovedgaden 77, 8410 Rønne

Team Ejendomme

Glas museet Ebeltoft, Strandvejen 8, 8400 Ebeltoft

Etablering af elevator m.v.

1. salsplan

Tegn. Nr. 3

Mål 1: 100

Tegn. Af: PF,
HMT

Dato: 07.08.09

Rev.

The customs house, 1st floor.



Co-funded by the
Erasmus+ Programme
of the European Union



Syddjurs
KOMMUNE



AARHUS
UNIVERSITET