

SPSS 21 Installation Guide

Author:

Kenneth Gabriel Birkedahl

Last updated:

16-07-2014

Step 1: Obtain a license from the IT-department

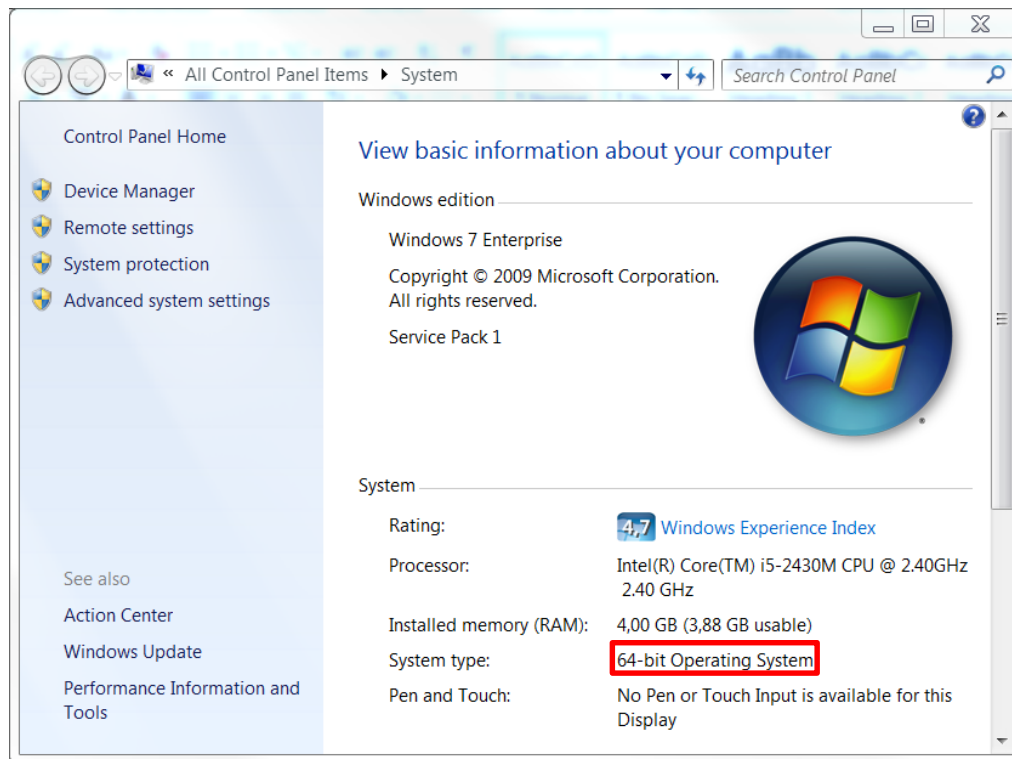
You can find information on the website.

Step 2: Make sure to download SPSS for the correct platform i.e. Mac OS X or Windows Version

For PC only:

In order to download the correct version of SPSS, it is necessary that you ensure whether you are running a 32 bit or 64 bit version of Windows. On Windows 7 and Windows Vista this can be done from:

- Start → Control Panel → System



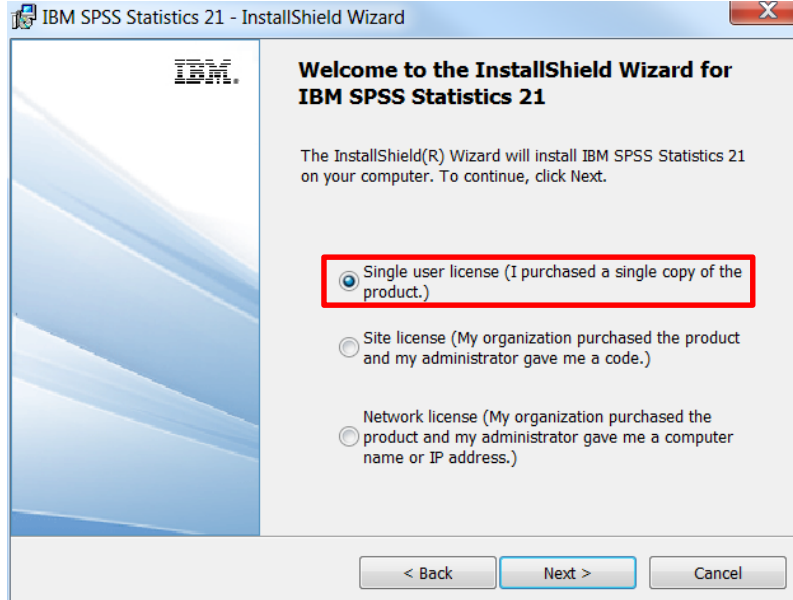
Step 3: Download the files

Choose the download link that matches your operative system.

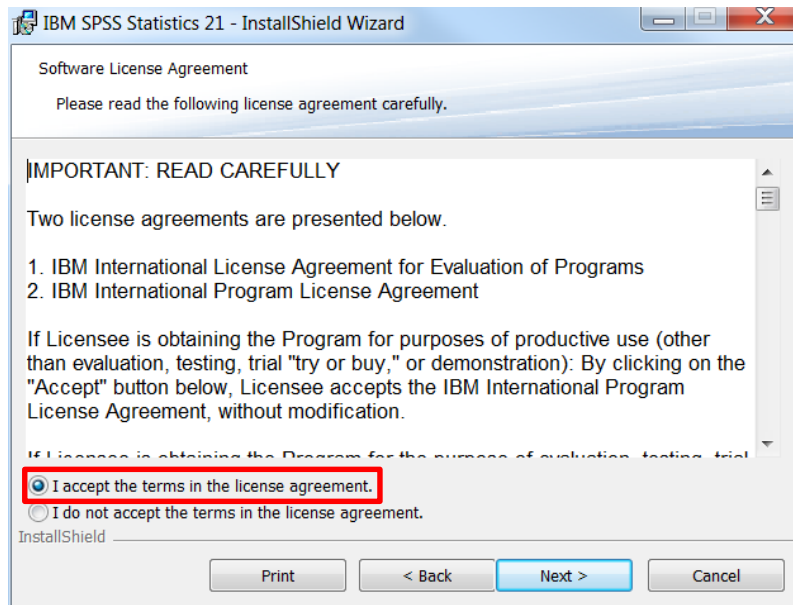
Step 4: Installing SPSS on your computer

Double click the downloaded file to start the SPSS installation and wait for the installation screen to pop up (it might take a while, accept to open the installer if asked):

First, choose 'Single user license' and press 'Next' to continue.



In the next window, read the license agreement, choose to accept and press 'Next' to continue.

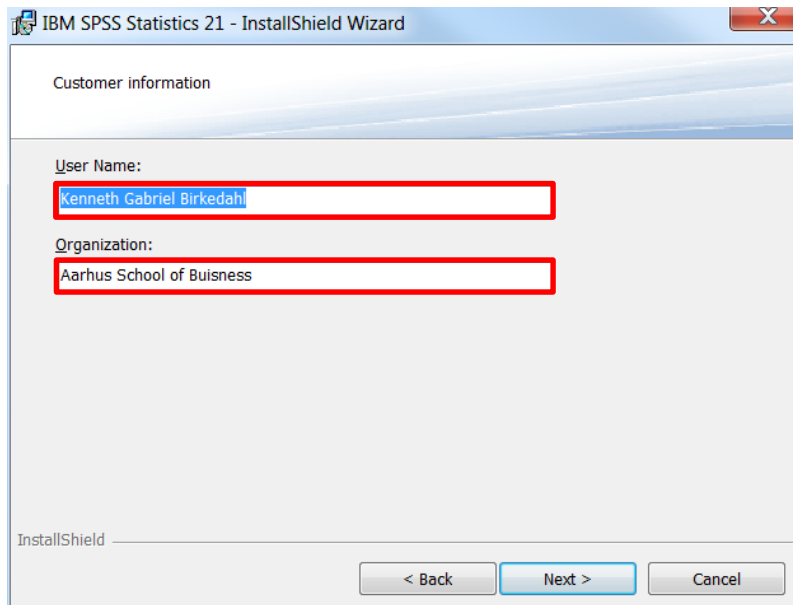


Now fill in your name and organisation

User Name: *Your Name*

Organization: *Aarhus University, Business and Social Sciences*

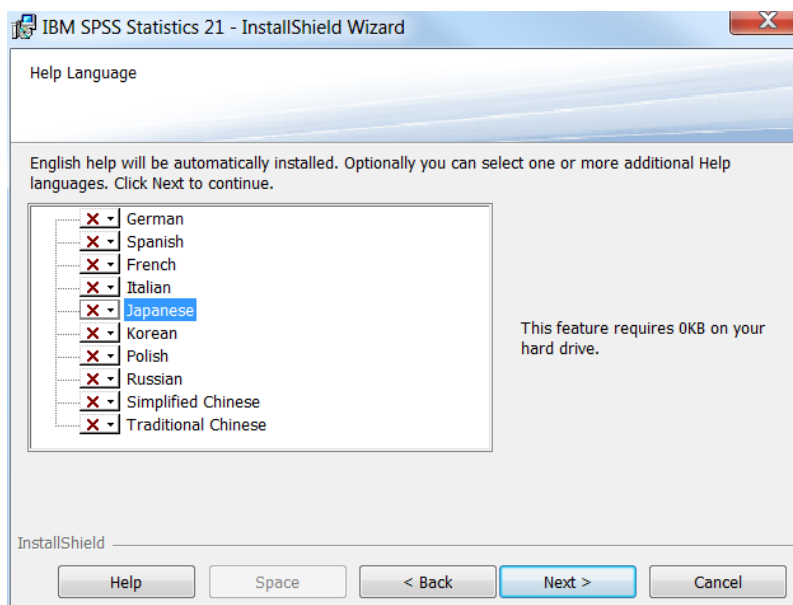
Press '**Next**' to continue.



The screenshot shows the 'Customer information' dialog box in the IBM SPSS Statistics 21 - InstallShield Wizard. The 'User Name' field contains 'Kenneth Gabriel Birkedah' and the 'Organization' field contains 'Aarhus School of Buisness'. Both fields are highlighted with a red rectangular border. At the bottom, there are three buttons: '< Back', 'Next >', and 'Cancel'.

(Optional) SPSS is installed in English by default. Next, choose any additional languages that you wish to install.

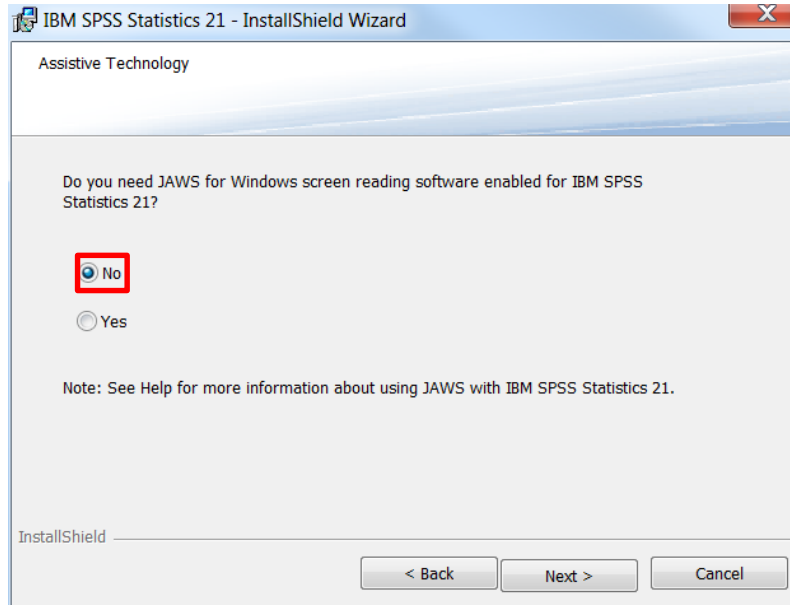
Press '**Next**' to continue.



The screenshot shows the 'Help Language' dialog box in the IBM SPSS Statistics 21 - InstallShield Wizard. The text reads: 'English help will be automatically installed. Optionally you can select one or more additional Help languages. Click Next to continue.' Below this is a list of languages with checkboxes: German, Spanish, French, Italian, Japanese, Korean, Polish, Russian, Simplified Chinese, and Traditional Chinese. The 'Japanese' checkbox is checked and highlighted with a blue selection bar. To the right of the list, a note states: 'This feature requires 0KB on your hard drive.' At the bottom, there are five buttons: 'Help', 'Space', '< Back', 'Next >', and 'Cancel'.

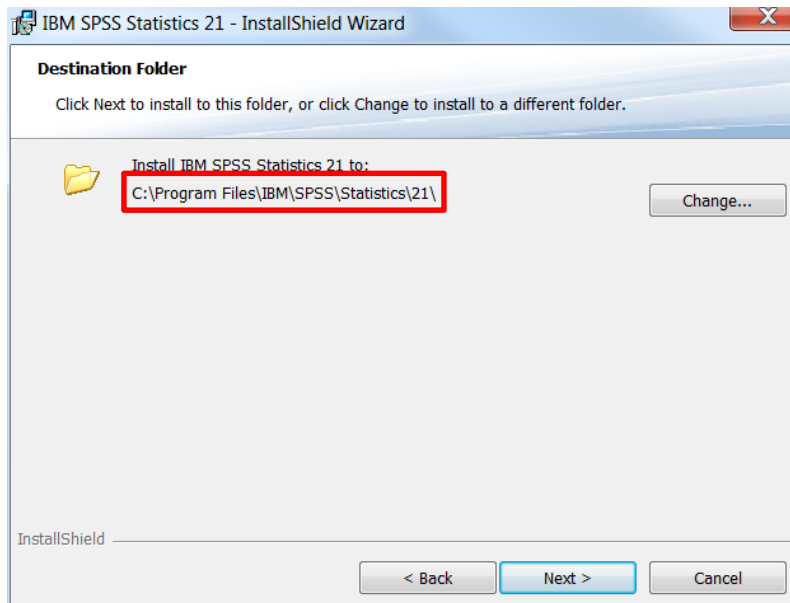
When asked to install 'JAWS' choose 'No'.

Press 'Next' to continue.

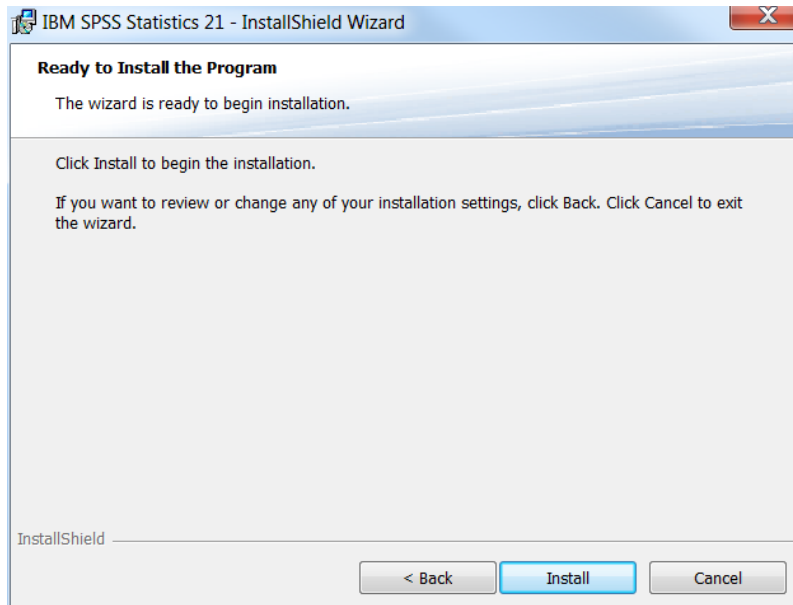


(Optional) Now, choose the destinations folder for the installation. By default SPSS is installed in the IBM-folder in 'Program files'.

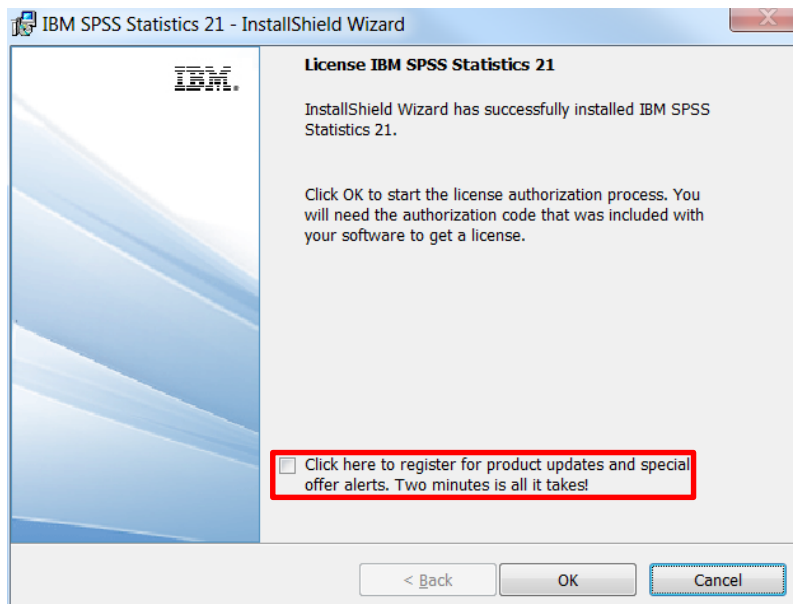
Press 'next' to accept your current installation folder.



Finally, press **'Install'** in order to start the installation.

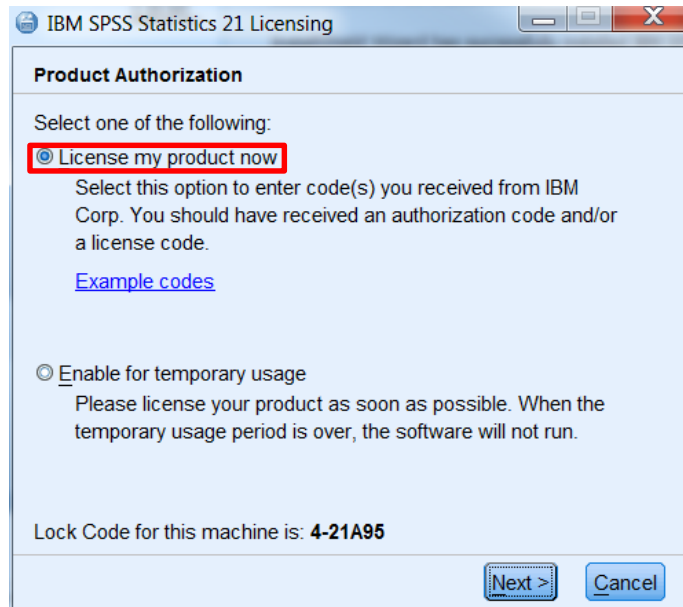


Wait for the installation to finish installing. Deselect **'registering for product updates and etc'**. Press **'OK'** to complete the installation.



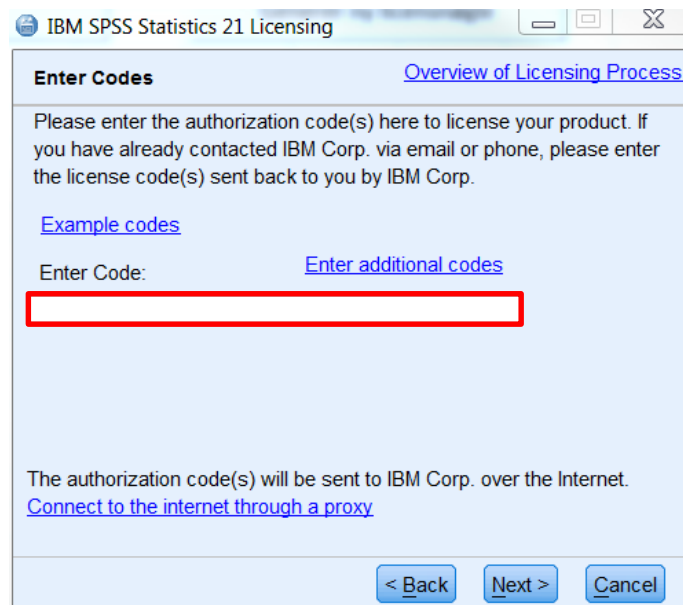
Lastly, SPSS must be registered with the serial number. The Authentication Wizard opens shortly after completion.

Choose to license the product and press **'Next'** to continue.



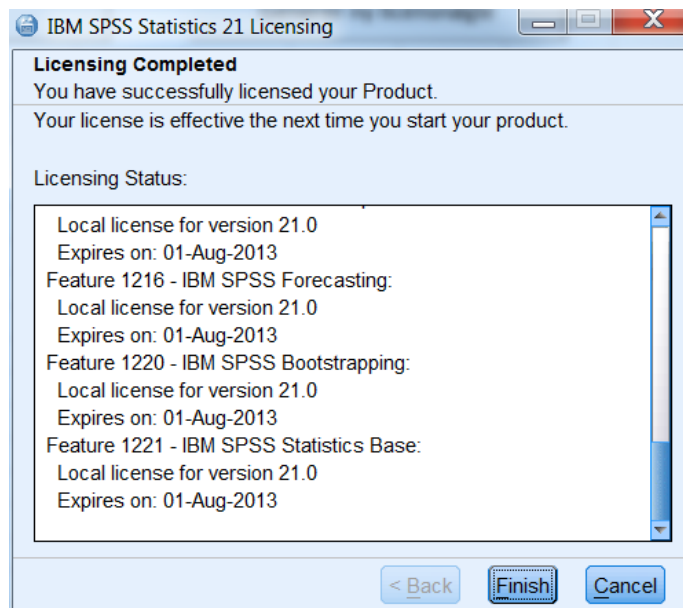
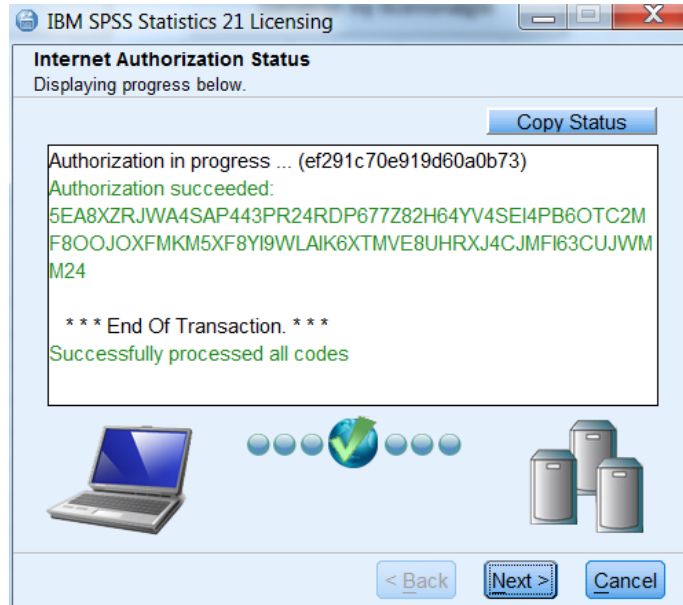
Type in the serial number that you obtained in step 1. Please check au.dk/it for more info.

Press **'Next'** to continue.



This should license the product. If done correctly an overview of your license will be shown. Press 'Next' to continue.

Finally, press 'Finish' in the next window to complete the registration and start using SPSS.



SPSS is now installed on your computer. If you experience any problems when installing or using the program, please contact the Analytics Group on analytics@asb.dk

Enjoy the program!

THIS GUIDE HAS BEEN PRODUCED BY**ANALYTICS GROUP**

Analytics Group, a division comprised of student instructors under AU IT, primarily offers support to researchers and employees.

Our field of competence is varied and covers questionnaire surveys, analyses and processing of collected data etc. AG also offers teaching assistance in a number of analytical resources such as SAS, SPSS and Excel by hosting courses organised by our student assistants. These courses are often an integrated part of the students' learning process regarding their specific academic area which ensures the coherence between these courses and the students' actual educational requirements.

In this respect, AG represents the main support division in matters of analytical software.

ADVANCED MULTIMEDIA GROUP

Advanced Multimedia Group is a division under AU IT supported by student instructors. Our primary objective is to convey knowledge to relevant user groups through manuals, courses and workshops.

Our course activities are mainly focused on MS Office, Adobe CS and CMS. Furthermore we engage in e-learning activities and auditive and visual communication of lectures and classes. AMG handles video assignments based on the recording, editing and distribution of lectures and we carry out a varied range of ad hoc assignments requested by employees.

In addition, AMG offers solutions regarding web development and we support students' and employees' daily use of typo3.

PLEASE ADDRESS QUESTIONS OR COMMENTS REGARDING THE CONTENTS OF THIS GUIDE TO

ANALYTICS@ASB.DK