

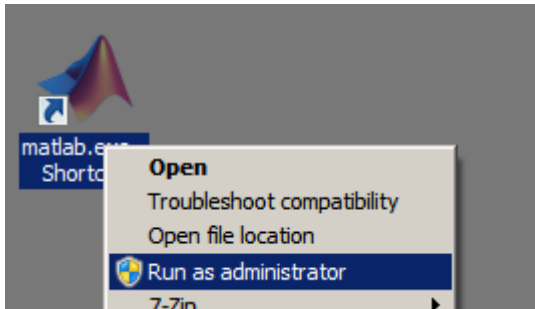
# Renew Your Matlab license.

---

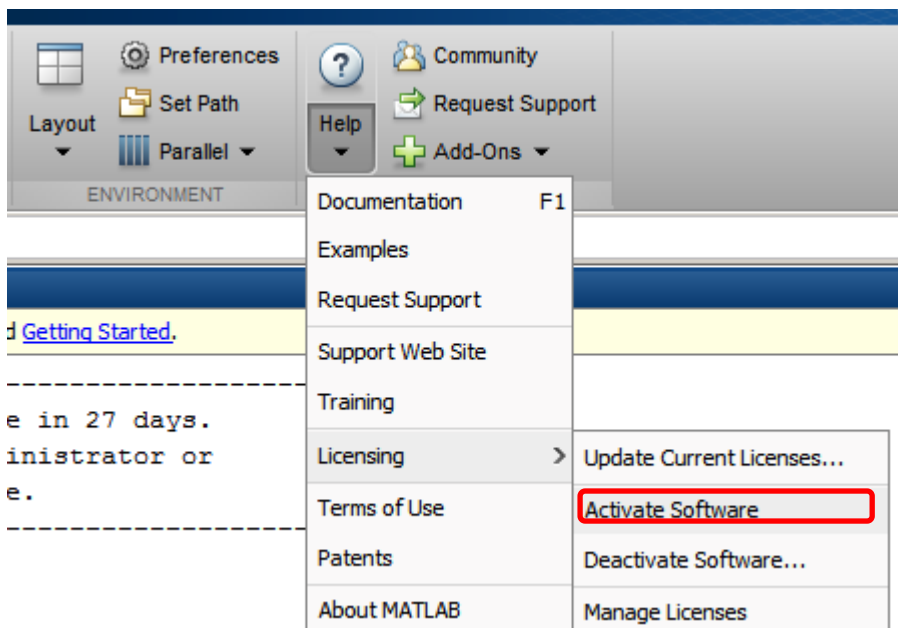
Follow these steps to reactivate your Matlab license.

Run Matlab as Administrator

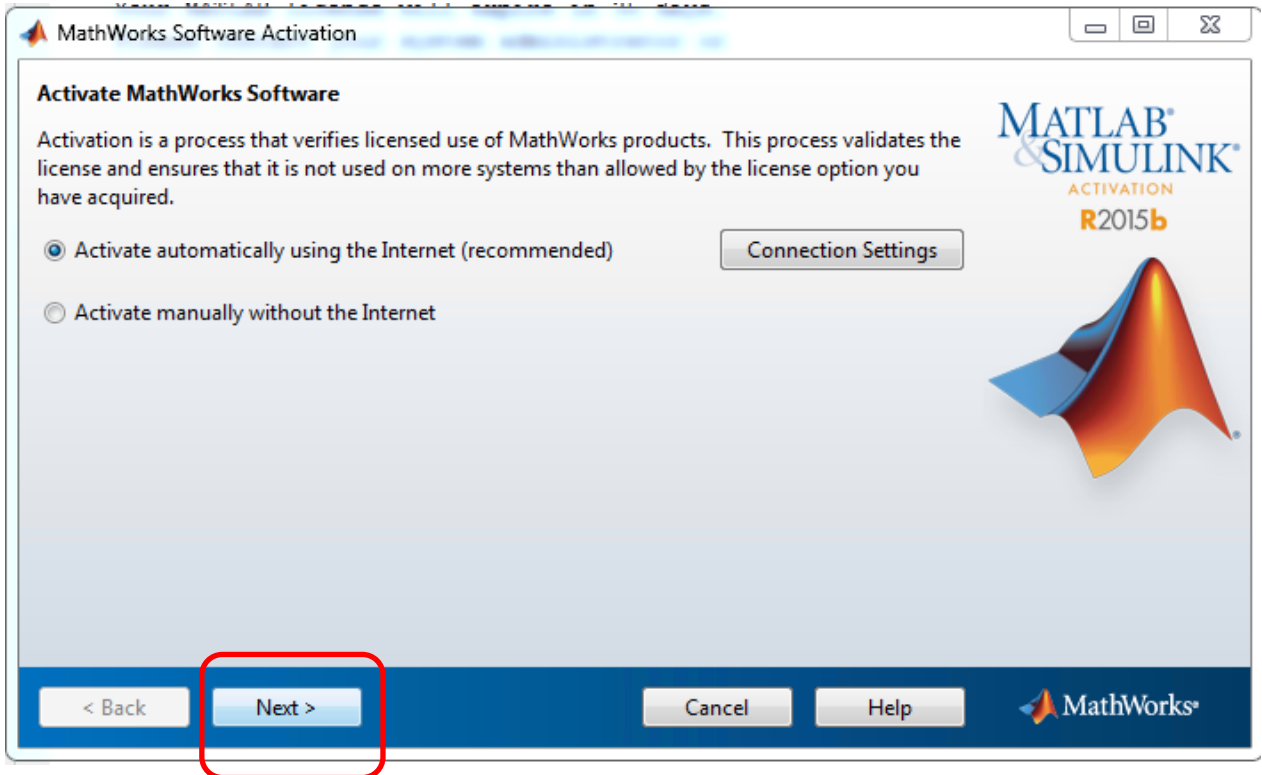
(Right-click on the Matlab icon and select "Run as administrator")



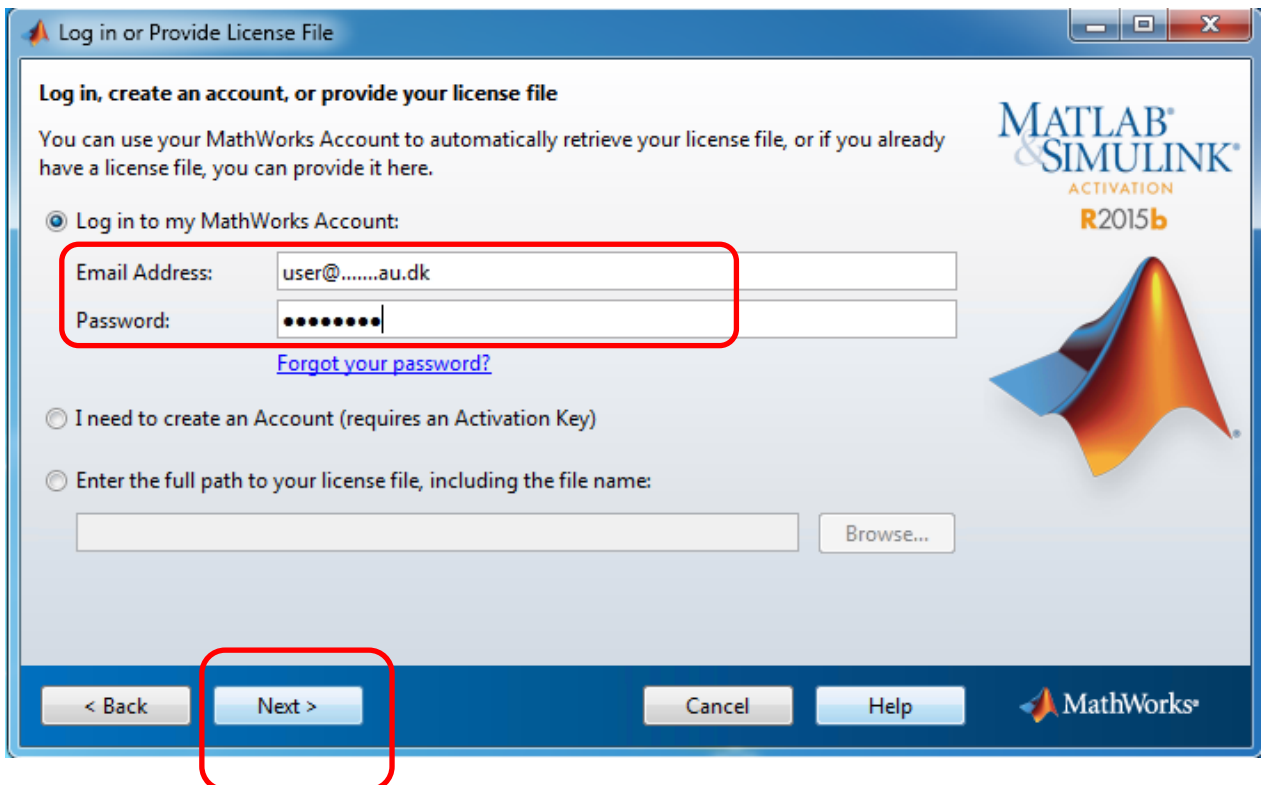
Expand the Help menu and select: Licensing > Activate Software



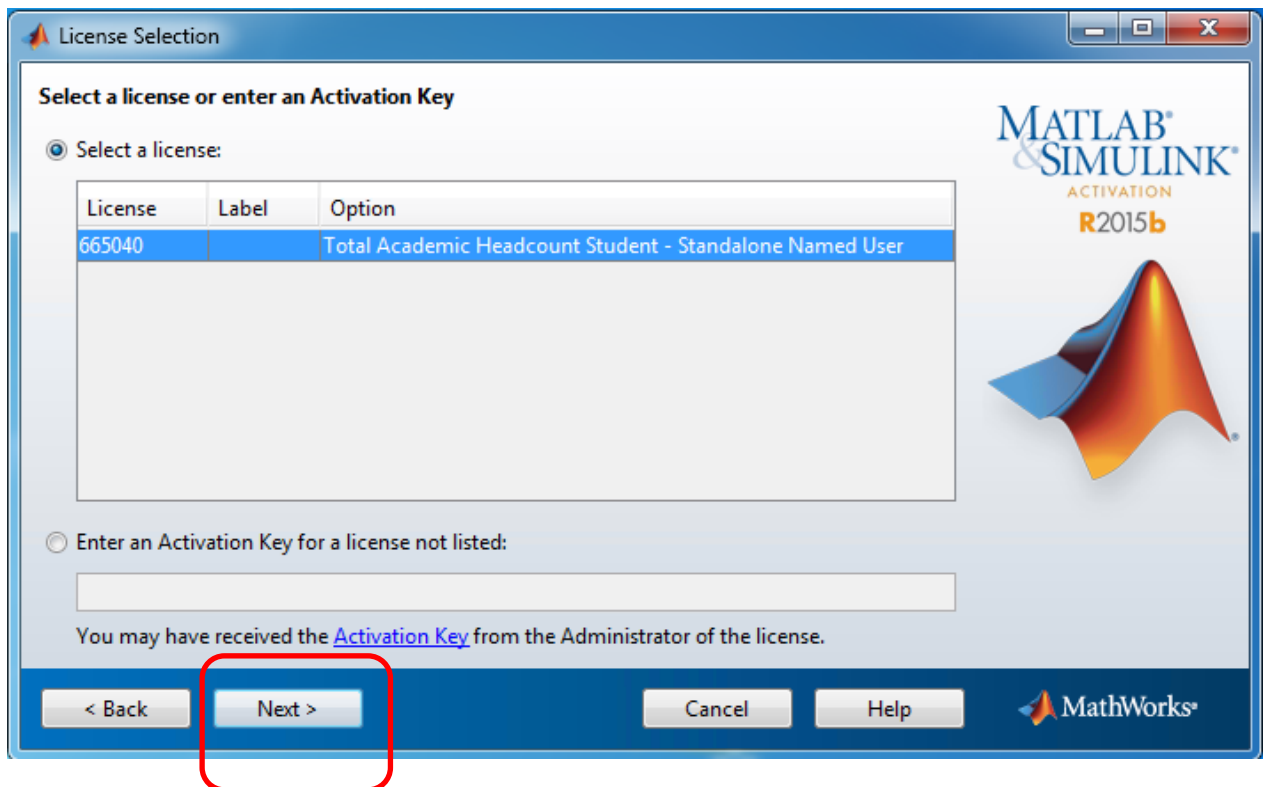
Click [Next]



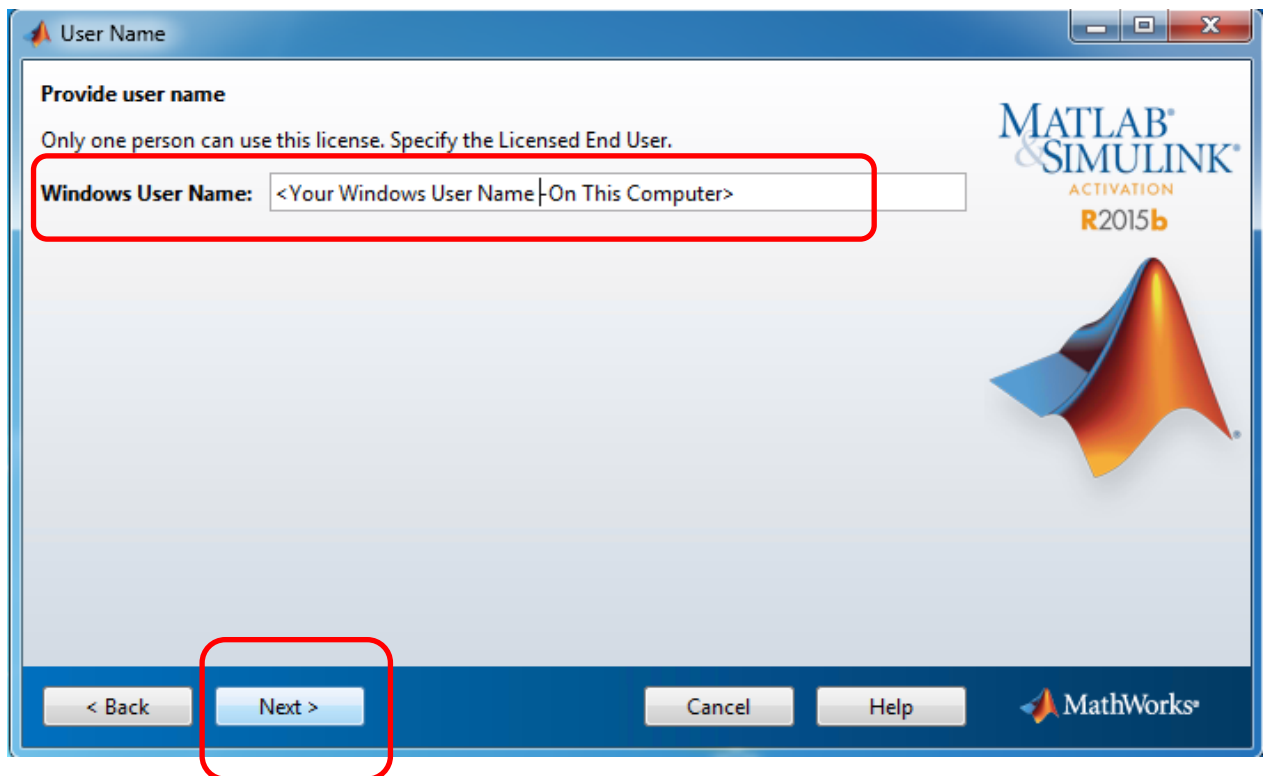
Type your MathWorks Account credentials (MathWorks Login information) & Click [Next]



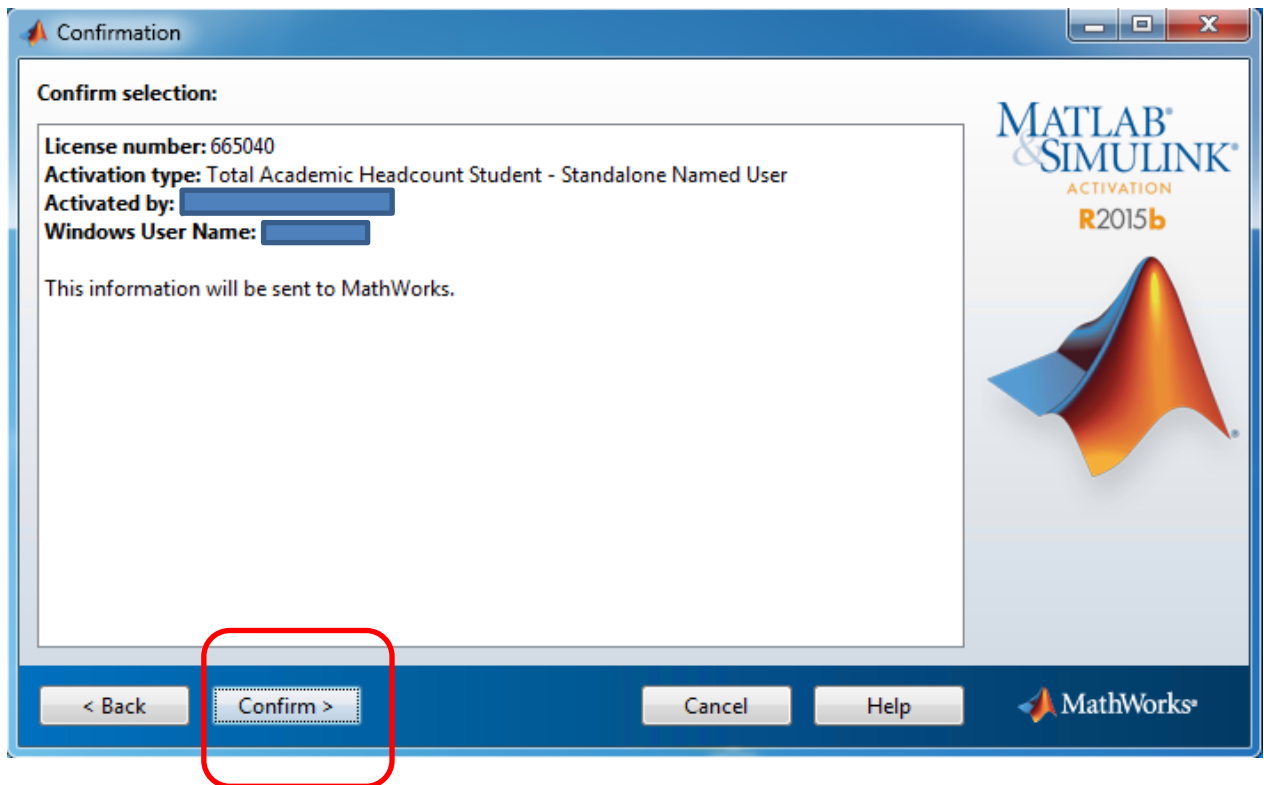
Click [Next]



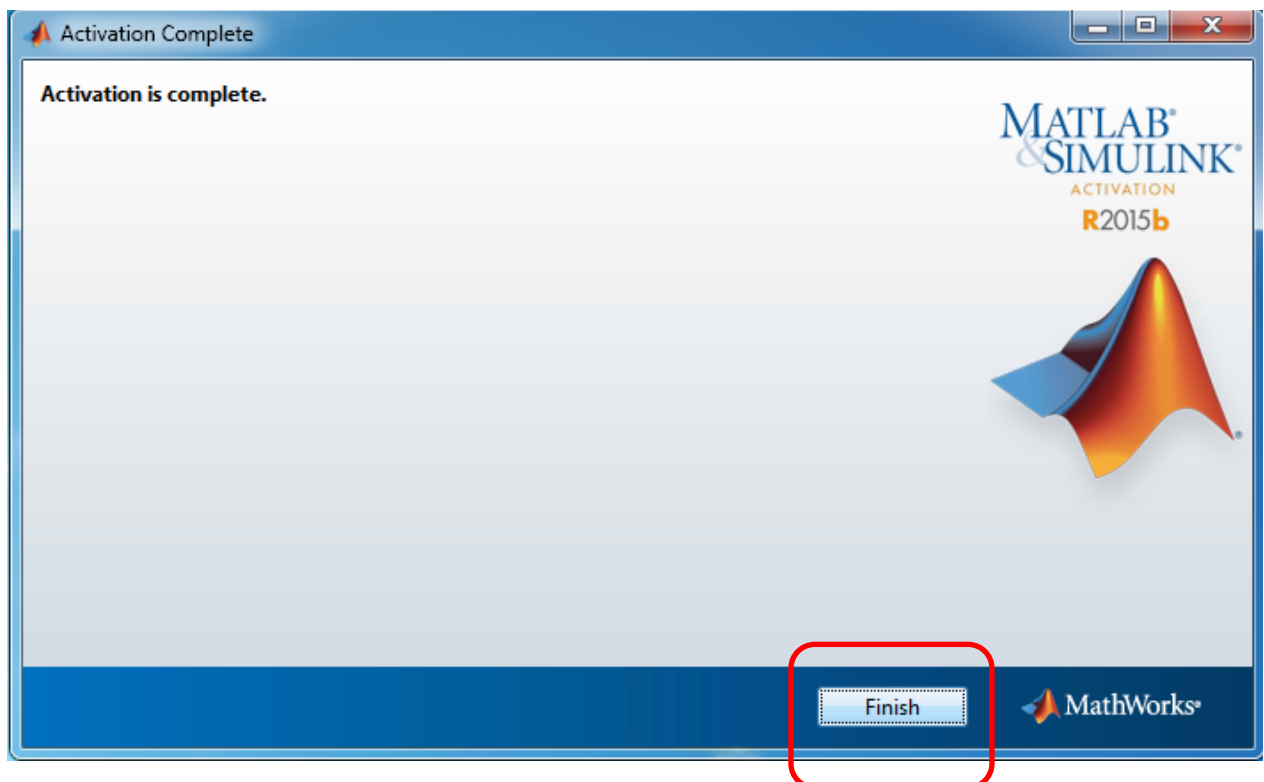
Type Your Windows User Name and Click [Next]



Click [Confirm]



Click [Finish]



Restart Matlab to complete the process.

If the guide doesn't work, please mail your local IT helpdesk. Find mail address here [au.dk/it/](http://au.dk/it/)

This document is an updated version of "Renew Matlab license" written by Karsten Rytter Sørensen

Rev. 2015-12-01 / pcheegaard