

SPSS 22 Installation Guide



Step 1: Obtain a license from the IT-department

If you are a student you can purchase the license [here](#).

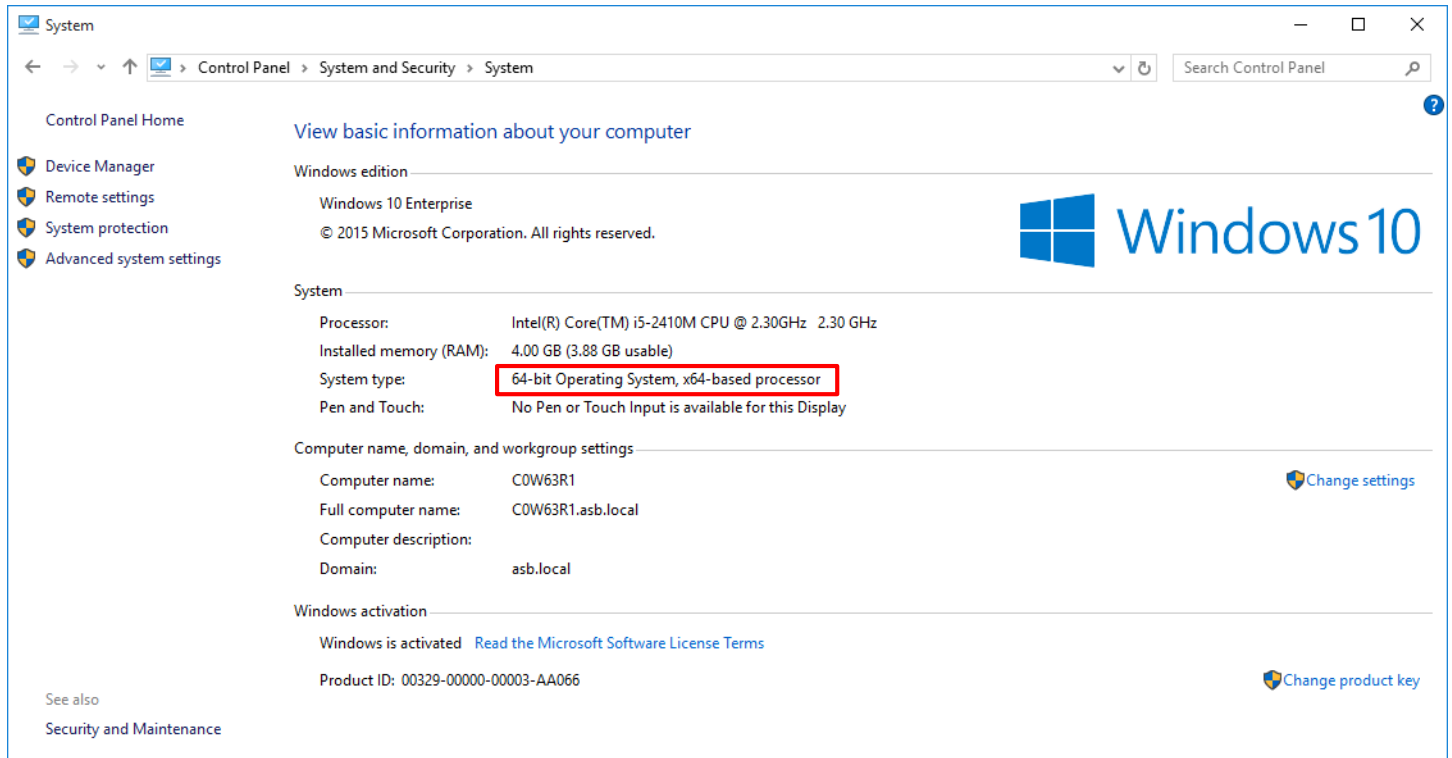
If you are an employee you can purchase the license through the bss it software site.

Step 2: Make sure to download SPSS for the correct platform i.e. Mac OS X or Windows Version

For PC only:

In order to download the correct version of SPSS, it is necessary that you ensure whether you are running a 32 bit or 64 bit version of Windows. This can be done in the following way.

- Start → Control Panel → System



The screenshot shows the Windows System information window. The title bar reads "System". The breadcrumb navigation is "Control Panel > System and Security > System". The main heading is "View basic information about your computer".

Windows edition

- Windows 10 Enterprise
- © 2015 Microsoft Corporation. All rights reserved.

System

Processor:	Intel(R) Core(TM) i5-2410M CPU @ 2.30GHz 2.30 GHz
Installed memory (RAM):	4.00 GB (3.88 GB usable)
System type:	64-bit Operating System, x64-based processor
Pen and Touch:	No Pen or Touch Input is available for this Display

Computer name, domain, and workgroup settings

Computer name:	COW63R1	Change settings
Full computer name:	COW63R1.asb.local	
Computer description:		
Domain:	asb.local	

Windows activation

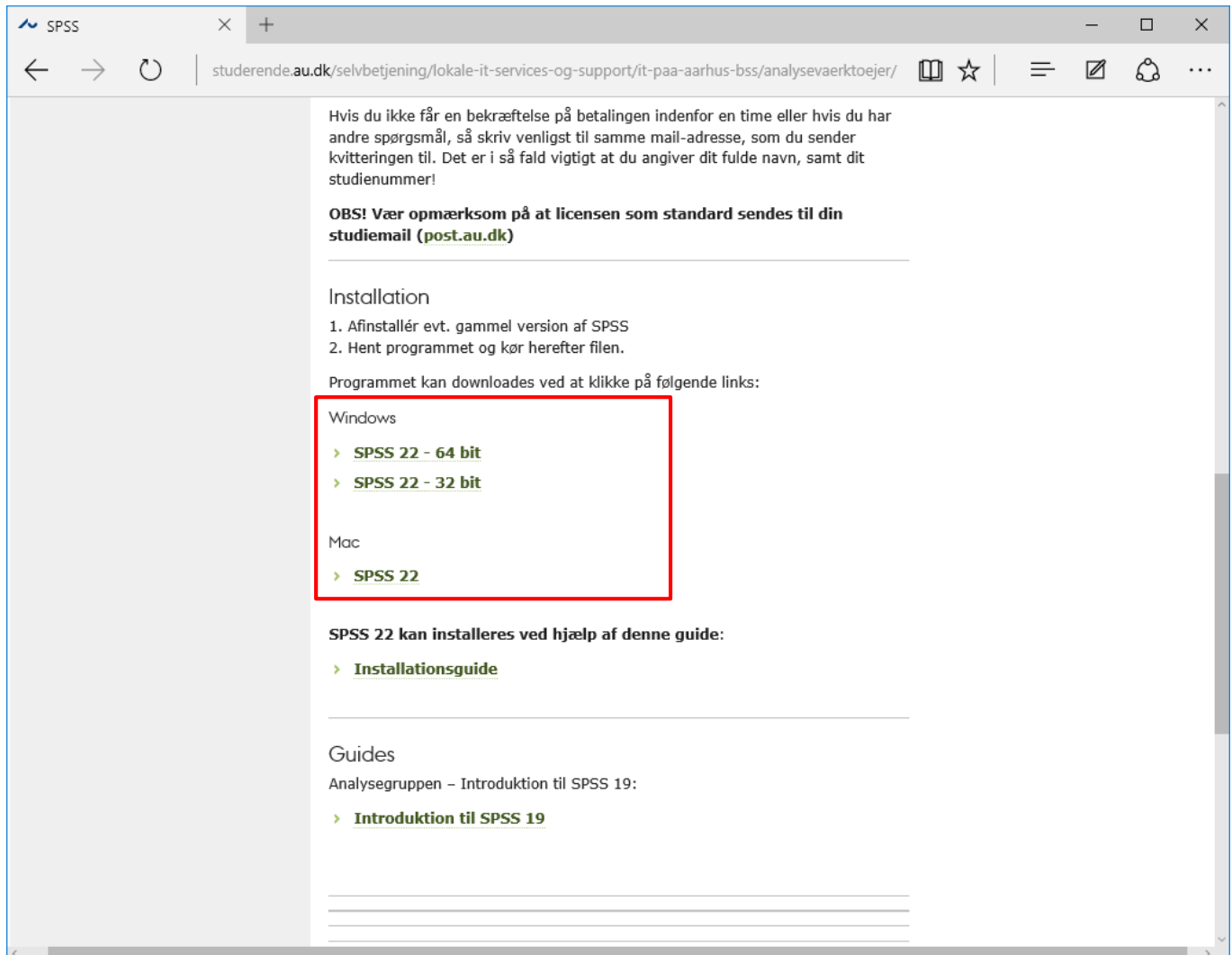
Windows is activated [Read the Microsoft Software License Terms](#)

Product ID: 00329-00000-00003-AA066 [Change product key](#)

See also
Security and Maintenance

Step 3: Download the files

Choose the download link that matches your operative system. The download links can be found [here](#), or in the email with your license.



SPSS

← → ↻ | studerende.au.dk/selvbetjening/lokale-it-services-og-support/it-paa-aarhus-bss/analysevaerktoejer/ | 📖 ☆ | ☰ ✎ 🔔 ⋮

Hvis du ikke får en bekræftelse på betalingen indenfor en time eller hvis du har andre spørgsmål, så skriv venligst til samme mail-adresse, som du sender kvitteringen til. Det er i så fald vigtigt at du angiver dit fulde navn, samt dit studienummer!

OBS! Vær opmærksom på at licensen som standard sendes til din studiemail (post.au.dk)

Installation

1. Afinstaller evt. gammel version af SPSS
2. Hent programmet og kørs herefter filen.

Programmet kan downloades ved at klikke på følgende links:

Windows

- > [SPSS 22 - 64 bit](#)
- > [SPSS 22 - 32 bit](#)

Mac

- > [SPSS 22](#)

SPSS 22 kan installeres ved hjælp af denne guide:

- > [Installationsguide](#)

Guides

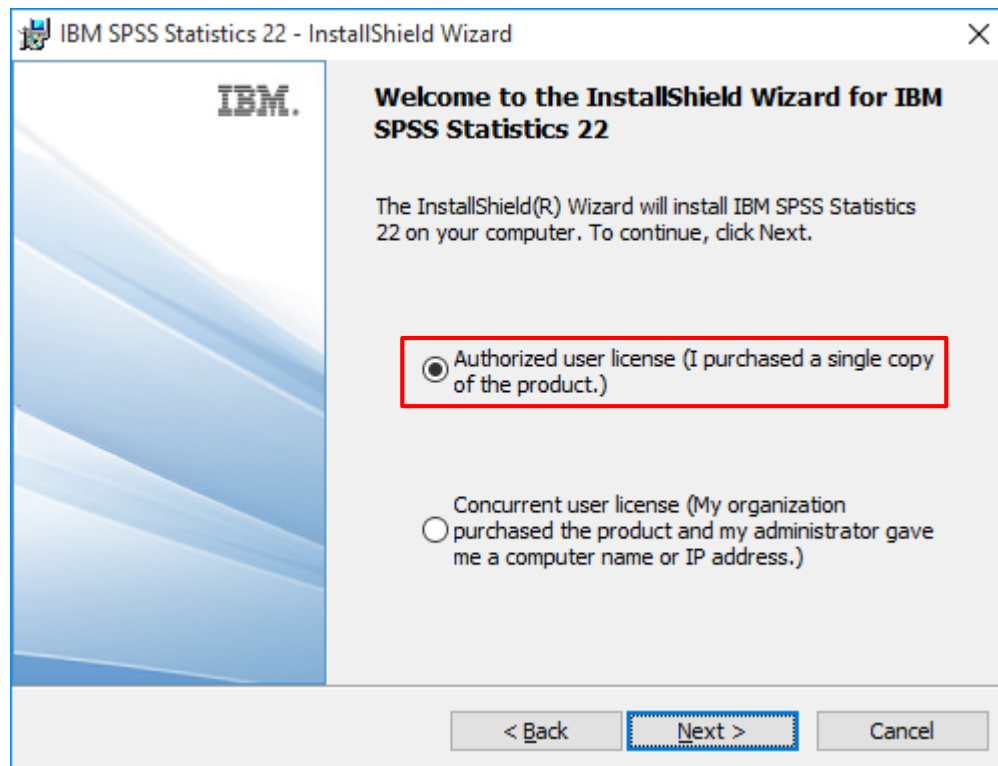
Analysegruppen - Introduktion til SPSS 19:

- > [Introduktion til SPSS 19](#)

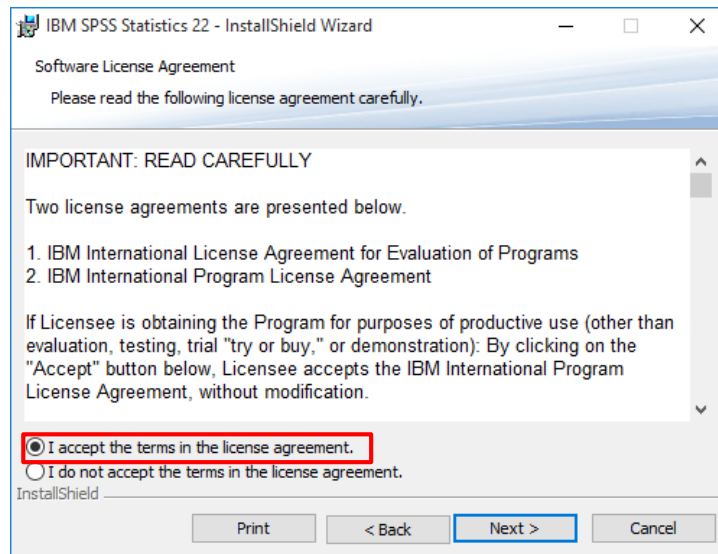
Step 4: Installing SPSS on your computer

Double click the downloaded file to start the SPSS installation and wait for the installation screen to pop up (it might take a while, accept to open the installer if asked):

- First, accept the listed terms by pressing **'Next'**.
- Then, choose **'Authorized user license'** and press **'Next'** to continue.



- Then accept the terms in the license agreement and press **'Next'** to continue.

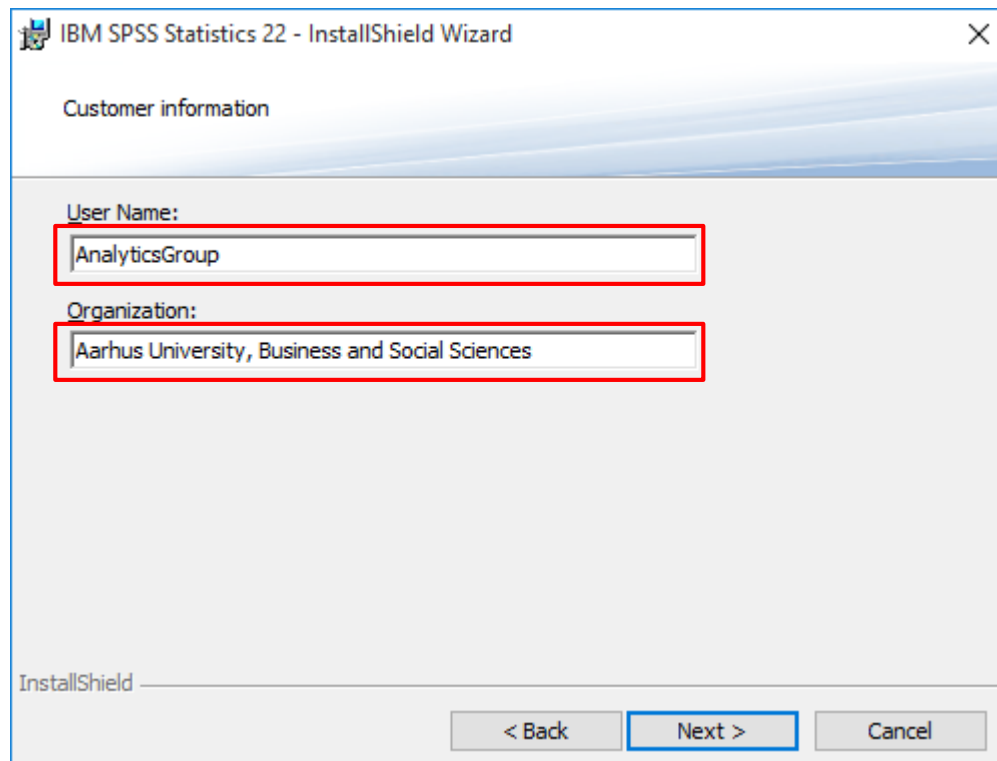


- Now fill in your name and organisation

User Name: *Your Name*

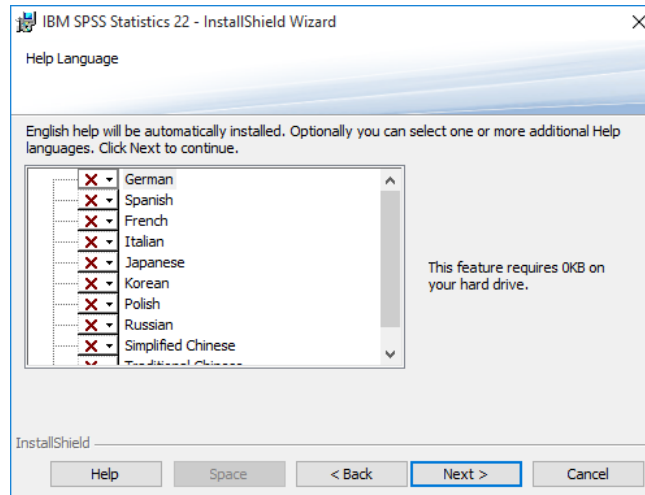
Organization: *Aarhus University, Business and Social Sciences*

Press **'Next'** to continue.



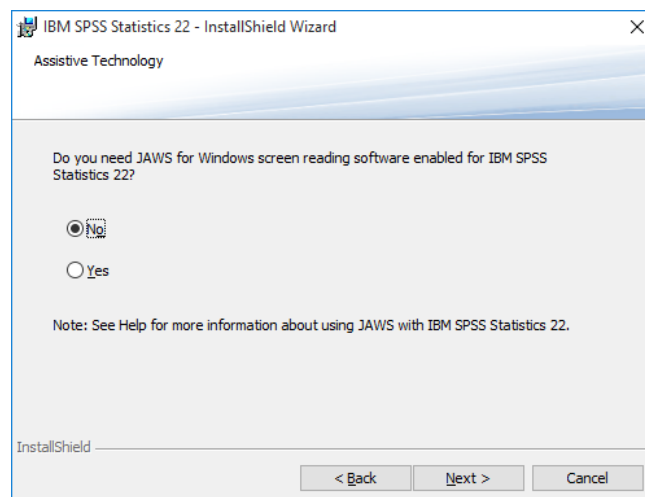
- **(Optional)** SPSS is installed in English by default. Next, choose any additional languages that you wish to install.

Press **'Next'** to continue.



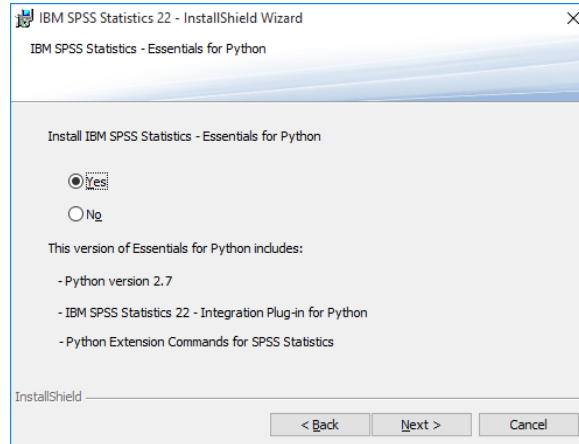
- When asked to install **'JAWS'** choose **'No'**.

Press **'Next'** to continue.



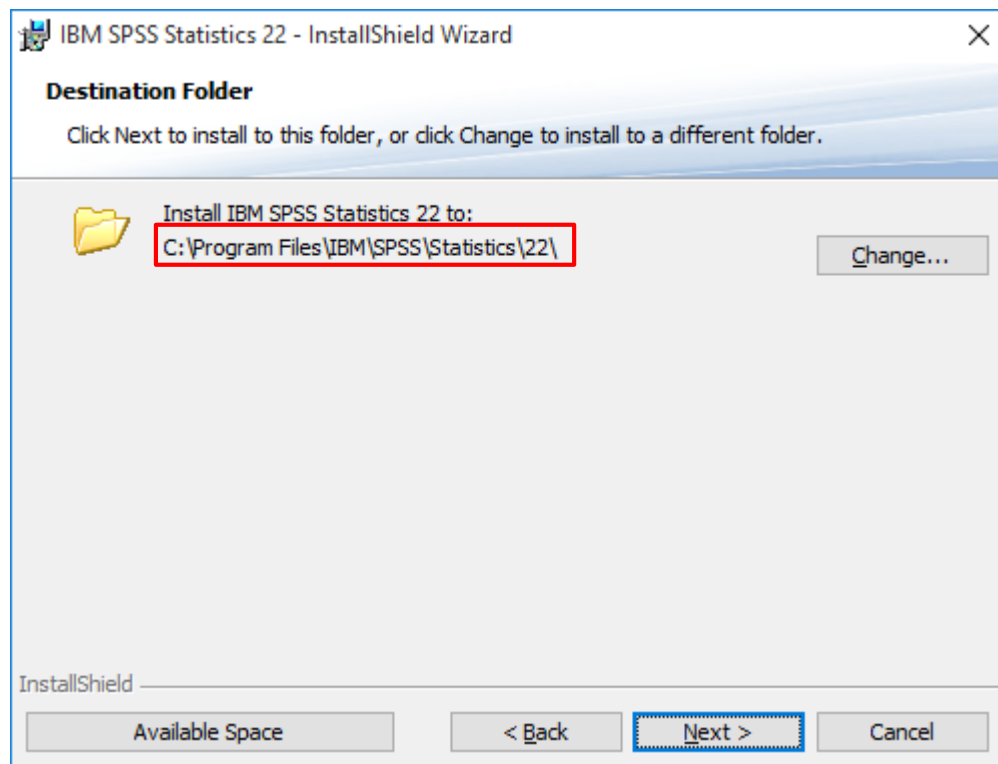
- When asked to install **Essentials for Python** choose 'No'.

Press **Next** to continue.

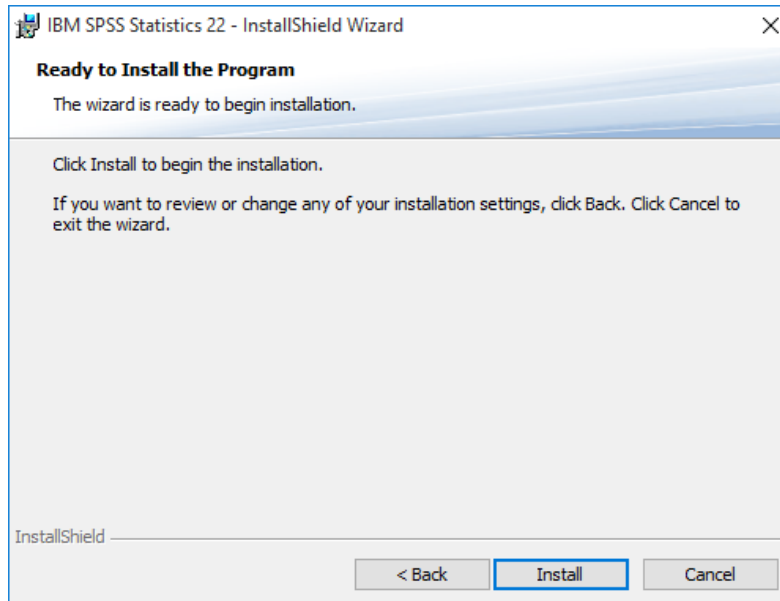


- (Optional)** Now, choose the destinations folder for the installation. By default SPSS is installed in the IBM-folder in **Program files**.

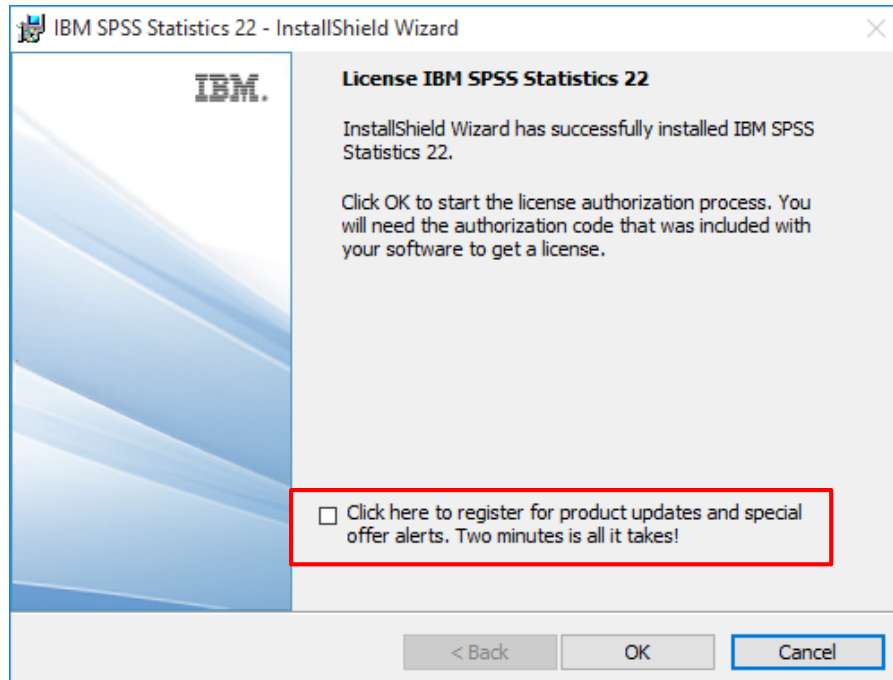
Press **next** to accept your current installation folder.



- Finally, press **'Install'** in order to start the installation.

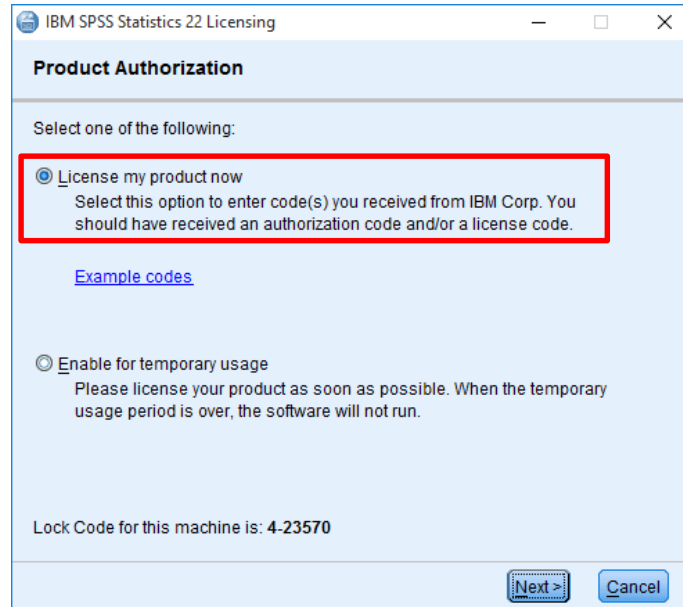


- Wait for the installation to finish installing. Deselect **'registering for product updates and etc'**. Press **'OK'** to complete the installation.



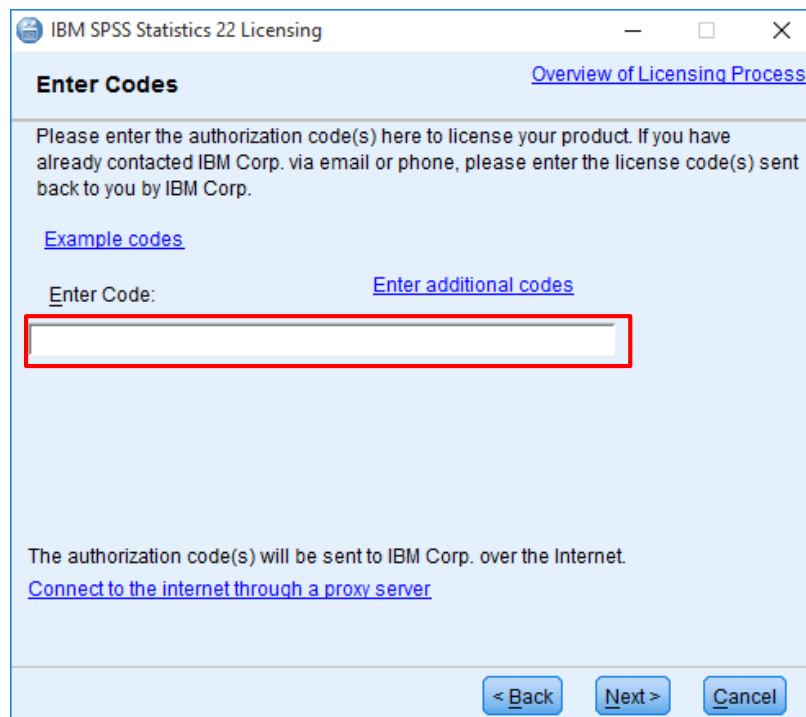
- Lastly, SPSS must be registered with the License. The Licensing Wizard opens shortly after completion.

Choose to license the product and press **'Next'** to continue.



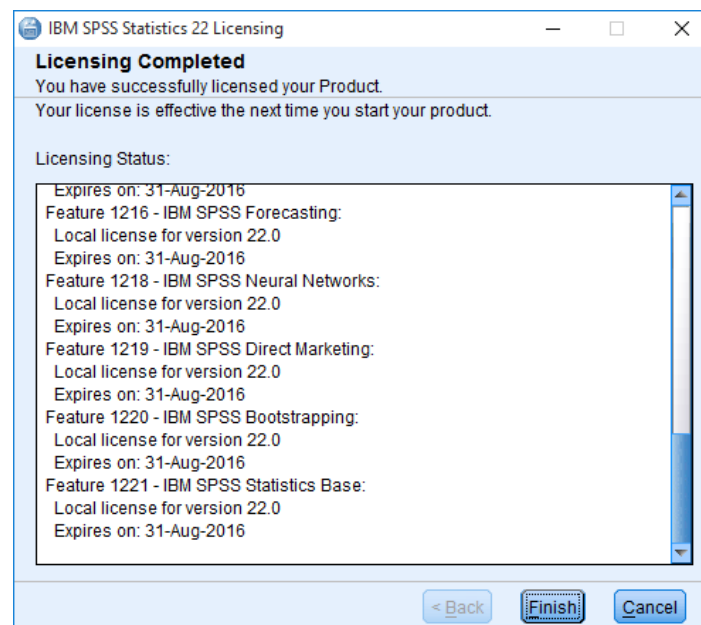
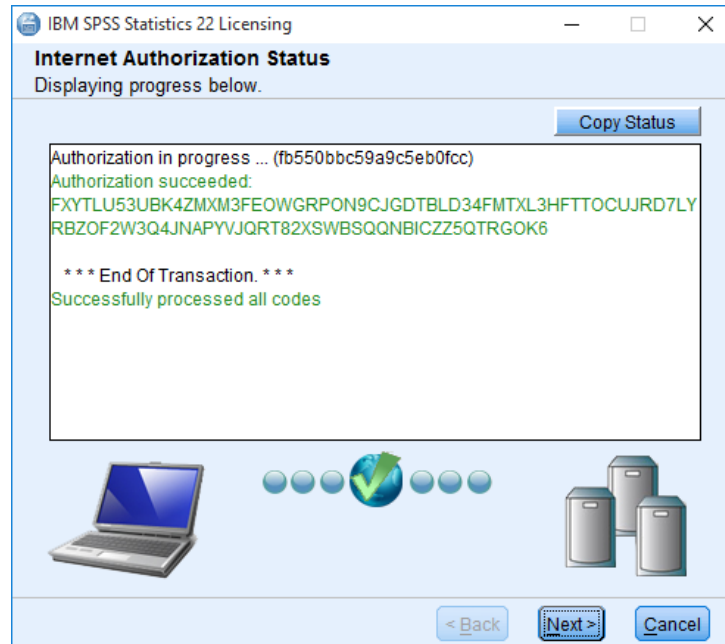
- Type in the license that you have received through email after your purchase.

Press **'Next'** to continue.



- This should license the product. If done correctly an overview of you license will be shown. Press **'Next'** to continue.

Finally, press **'Finish'** in the next window to complete the registration and start using SPSS.



SPSS is now installed on your computer (Restart if asked to). If you experience any problems when installing or using the program, please contact the Analytics Group on analytics@au.dk

Enjoy the software!

THIS GUIDE HAS BEEN PRODUCED BY**ANALYTICS GROUP**

Analytics Group, a division comprised of student instructors under AU IT, primarily offers support to researchers and employees.

Our field of competence is varied and covers questionnaire surveys, analyses and processing of collected data etc. AG also offers teaching assistance in a number of analytical resources such as SAS, SPSS and Excel by hosting courses organised by our student assistants. These courses are often an integrated part of the students' learning process regarding their specific academic area which ensures the coherence between these courses and the students' actual educational requirements.

In this respect, AG represents the main support division in matters of analytical software.

ADVANCED MULTIMEDIA GROUP

Advanced Multimedia Group is a division under AU IT supported by student instructors. Our primary objective is to convey knowledge to relevant user groups through manuals, courses and workshops.

Our course activities are mainly focused on MS Office, Adobe CS and CMS. Furthermore we engage in e-learning activities and auditive and visual communication of lectures and classes. AMG handles video assignments based on the recording, editing and distribution of lectures and we carry out a varied range of ad hoc assignments requested by employees.

In addition, AMG offers solutions regarding web development and we support students' and employees' daily use of typo3.

PLEASE ADDRESS QUESTIONS OR COMMENTS REGARDING THE CONTENTS OF THIS GUIDE TO

ANALYTICS@AU.DK