

SPSS 26 Installation Guide



Step 1: Obtain a license from the IT-department

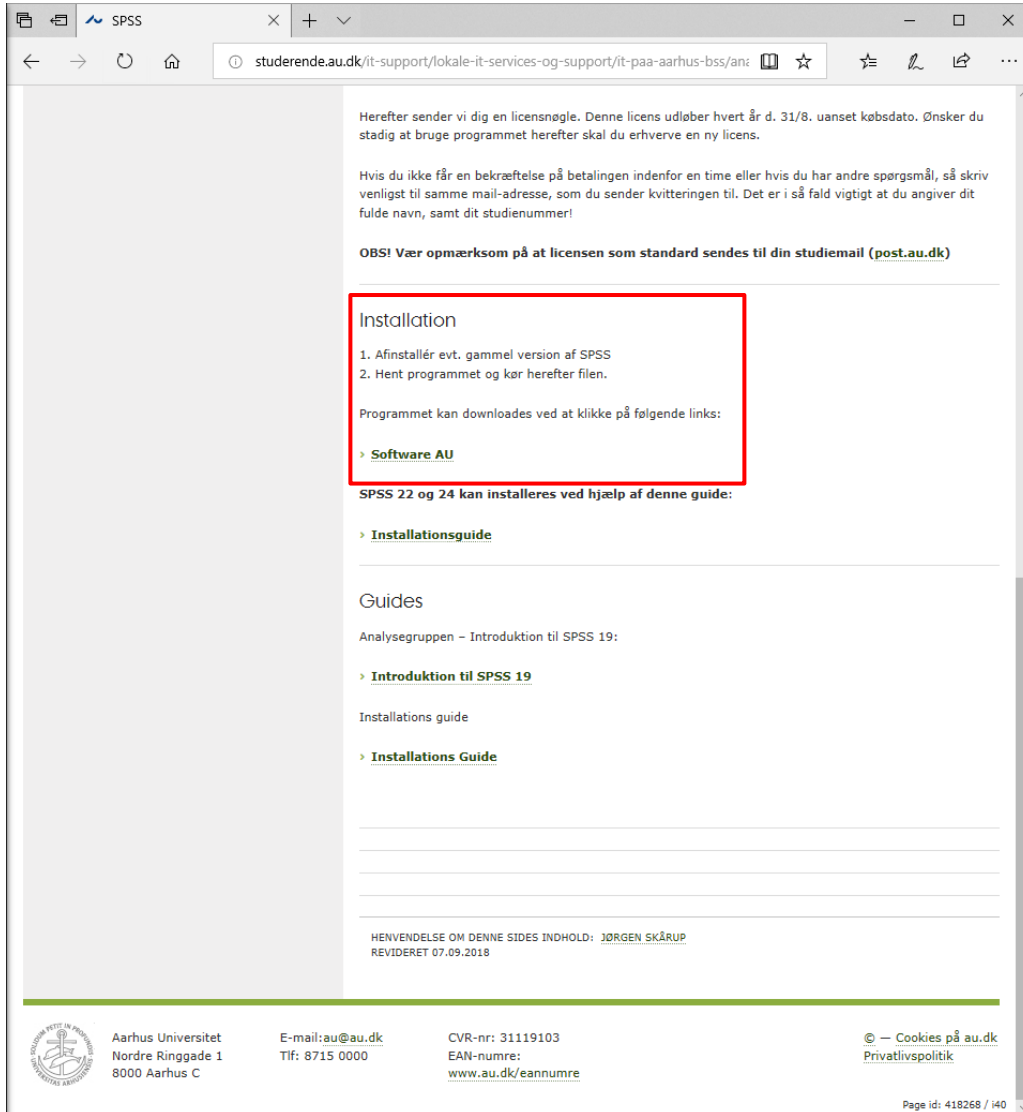
If you are a student you can purchase the license [here](#).

If you are an employee you can purchase the license through the bss it software site.

Step 2: Download the files

Choose the download link. The download links can be found [here](#), or in the email with your license.

- Log in using your `au<AUID>@uni.au.dk` (e.g. `au123456@uni.au.dk`) and your MIT.au.dk password.



Heretter sender vi dig en licensnøgle. Denne licens udløber hvert år d. 31/8. uanset købsdato. Ønsker du stadig at bruge programmet herefter skal du erhverve en ny licens.

Hvis du ikke får en bekræftelse på betalingen indenfor en time eller hvis du har andre spørgsmål, så skriv venligst til samme mail-adresse, som du sender kvitteringen til. Det er i så fald vigtigt at du angiver dit fulde navn, samt dit studienummer!

OBS! Vær opmærksom på at licensen som standard sendes til din studiemail (post.au.dk)

Installation

1. Afinstallér evt. gammel version af SPSS
2. Hent programmet og kørs herefter filen.

Programmet kan downloades ved at klikke på følgende links:

- > [Software AU](#)

SPSS 22 og 24 kan installeres ved hjælp af denne guide:

- > [Installationsguide](#)

Guides


Analysegruppen - Introduktion til SPSS 19:

- > [Introduktion til SPSS 19](#)

Installations guide

- > [Installations Guide](#)

HENVENDELSE OM DENNE SIDES INDHOLD: JØRGEN SKÅRUP
REVIDERET 07.09.2018

 Aarhus Universitet
Nordre Ringgade 1
8000 Aarhus C

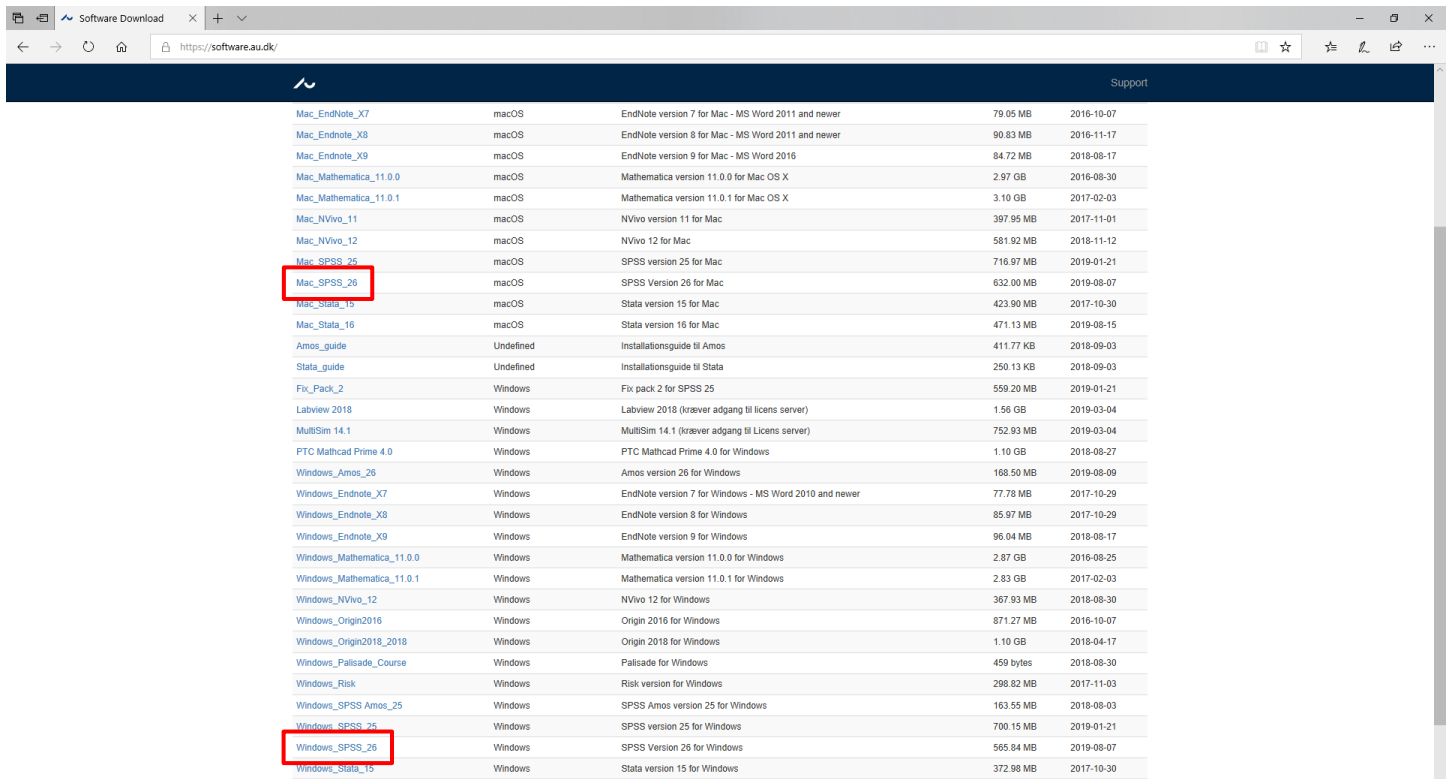
E-mail: au@au.dk
Tlf: 8715 0000

CVR-nr: 31119103
EAN-numre:
www.au.dk/eannumre

© – Cookies på au.dk
[Privatlivspolitik](#)

Page id: 418268 / i40

Choose the correct platform i.e. Mac OS X or Windows Version:

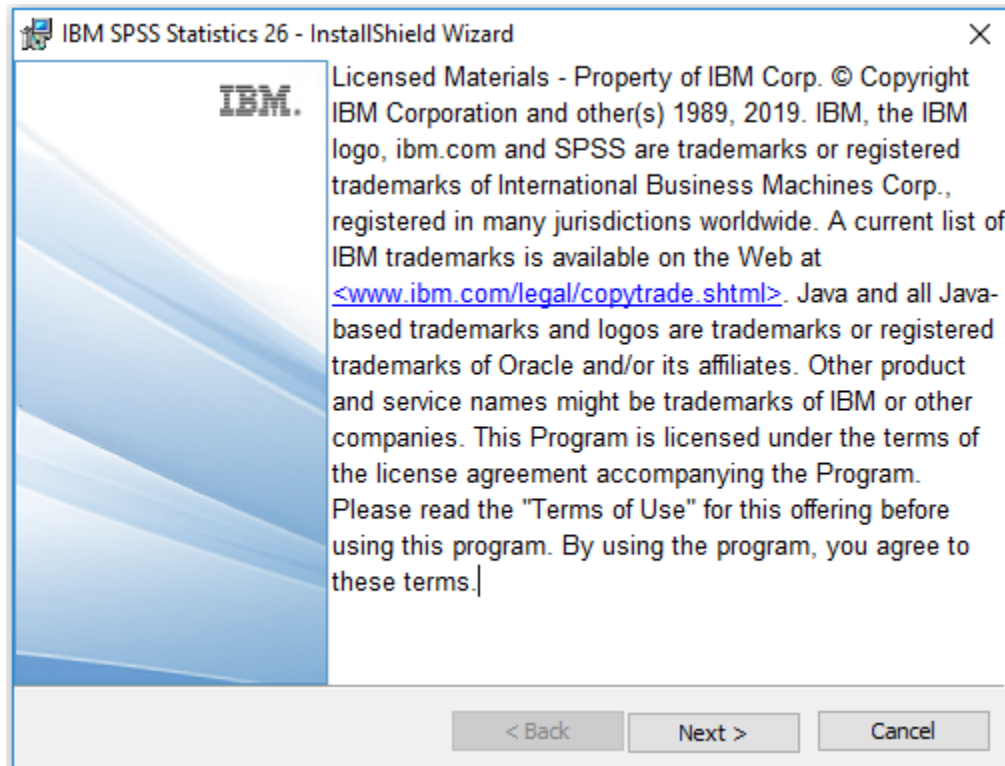


Software Name	Platform	Description	Size	Release Date
Mac_EndNote_X7	macOS	EndNote version 7 for Mac - MS Word 2011 and newer	79.05 MB	2016-10-07
Mac_Endnote_X8	macOS	EndNote version 8 for Mac - MS Word 2011 and newer	90.83 MB	2016-11-17
Mac_Endnote_X9	macOS	EndNote version 9 for Mac - MS Word 2016	84.72 MB	2018-08-17
Mac_Mathematica_11.0.0	macOS	Mathematica version 11.0.0 for Mac OS X	2.97 GB	2016-08-30
Mac_Mathematica_11.0.1	macOS	Mathematica version 11.0.1 for Mac OS X	3.10 GB	2017-02-03
Mac_NVivo_11	macOS	NVivo version 11 for Mac	397.95 MB	2017-11-01
Mac_NVivo_12	macOS	NVivo 12 for Mac	581.92 MB	2018-11-12
Mac_SPSS_25	macOS	SPSS version 25 for Mac	716.97 MB	2019-01-21
Mac_SPSS_26	macOS	SPSS Version 26 for Mac	632.00 MB	2019-08-07
Mac_Stata_15	macOS	Stata version 15 for Mac	423.90 MB	2017-10-30
Mac_Stata_16	macOS	Stata version 16 for Mac	471.13 MB	2019-08-15
Amos_guide	Undefined	Installationsguide til Amos	411.77 KB	2018-09-03
Stata_guide	Undefined	Installationsguide til Stata	250.13 KB	2018-09-03
Fix_Pack_2	Windows	Fix pack 2 for SPSS 25	559.20 MB	2019-01-21
Labview 2018	Windows	Labview 2018 (kræver adgang til licens server)	1.56 GB	2019-03-04
MultiSim 14.1	Windows	MultiSim 14.1 (kræver adgang til Licens server)	752.93 MB	2019-03-04
PTC Mathcad Prime 4.0	Windows	PTC Mathcad Prime 4.0 for Windows	1.10 GB	2018-08-27
Windows_Amos_26	Windows	Amos version 26 for Windows	168.50 MB	2019-08-09
Windows_Endnote_X7	Windows	EndNote version 7 for Windows - MS Word 2010 and newer	77.78 MB	2017-10-29
Windows_Endnote_X8	Windows	EndNote version 8 for Windows	85.97 MB	2017-10-29
Windows_Endnote_X9	Windows	EndNote version 9 for Windows	96.04 MB	2018-08-17
Windows_Mathematica_11.0.0	Windows	Mathematica version 11.0.0 for Windows	2.87 GB	2016-08-25
Windows_Mathematica_11.0.1	Windows	Mathematica version 11.0.1 for Windows	2.83 GB	2017-02-03
Windows_NVivo_12	Windows	NVivo 12 for Windows	367.93 MB	2018-08-30
Windows_Origin2016	Windows	Origin 2016 for Windows	871.27 MB	2016-10-07
Windows_Origin2018_2018	Windows	Origin 2018 for Windows	1.10 GB	2018-04-17
Windows_Palisade_Course	Windows	Palisade for Windows	459 bytes	2018-08-30
Windows_Risk	Windows	Risk version for Windows	298.82 MB	2017-11-03
Windows_SPSS Amos_25	Windows	SPSS Amos version 25 for Windows	163.55 MB	2018-08-03
Windows_SPSS_25	Windows	SPSS version 25 for Windows	700.15 MB	2019-01-21
Windows_SPSS_26	Windows	SPSS Version 26 for Windows	565.84 MB	2019-08-07
Windows_Stata_15	Windows	Stata version 15 for Windows	372.98 MB	2017-10-30

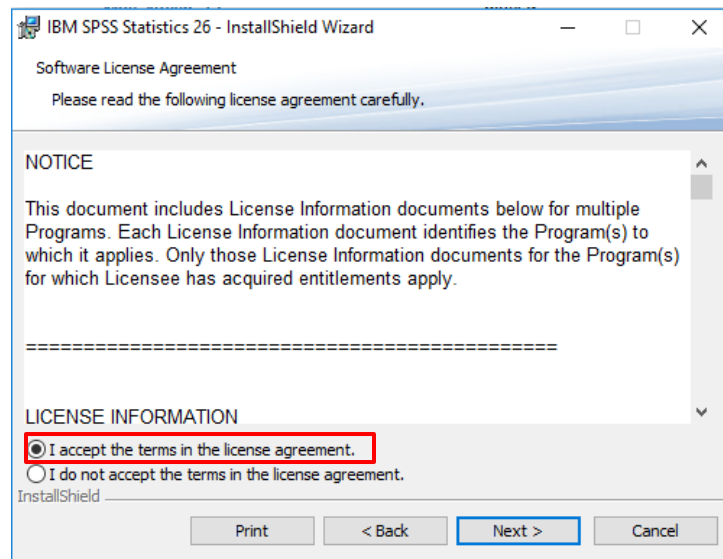
Step 3: Installing SPSS on your computer

Double click the downloaded file to start the SPSS installation and wait for the installation screen to pop up (it might take a while, accept to open the installer if asked):

- First, accept the listed terms by pressing 'Next'.

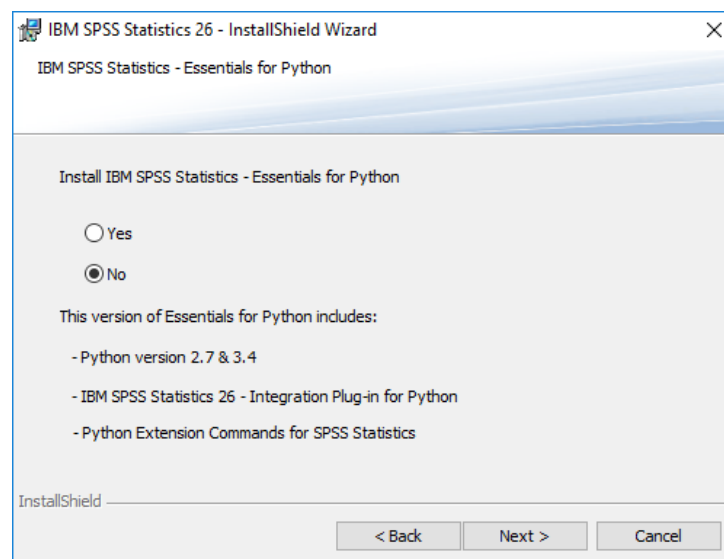


- Then accept the terms in the license agreement and press 'Next' to continue.



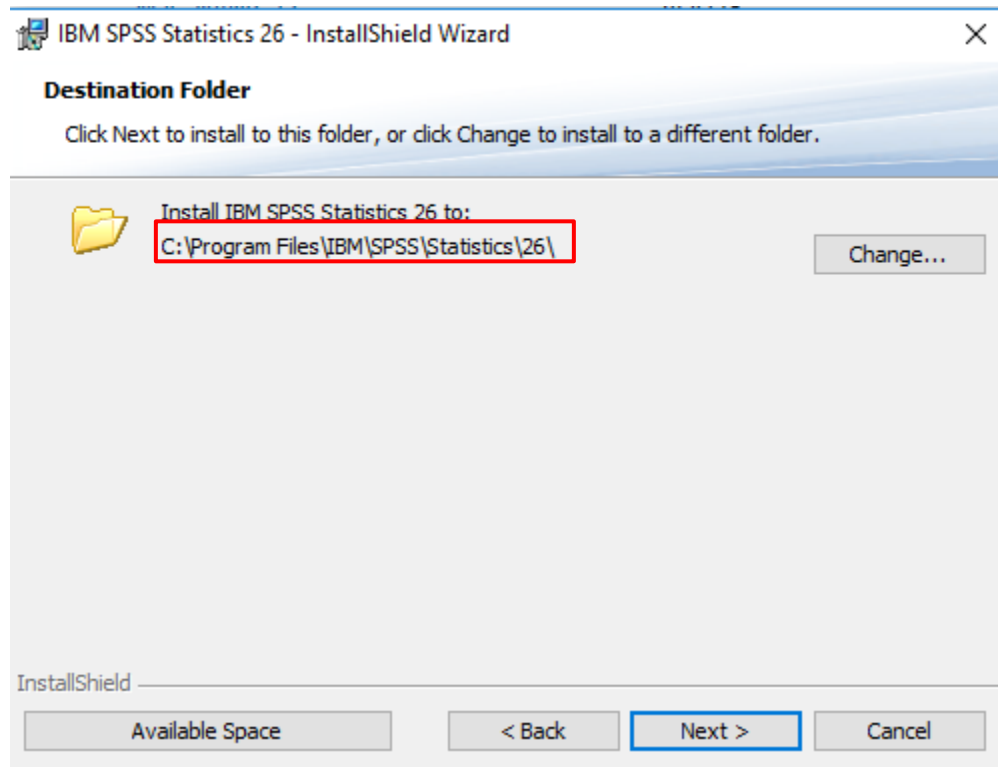
- When asked to install 'Essentials for Python' choose 'No'.

Press 'Next' to continue.

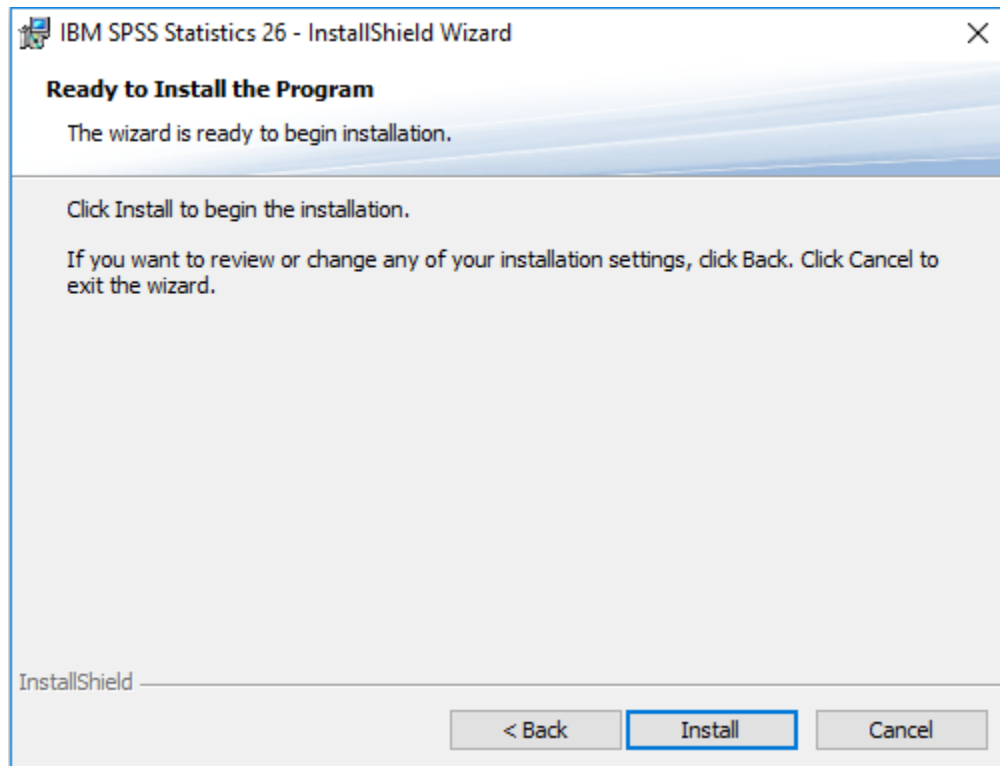


- (Optional) Now, choose the destinations folder for the installation. By default SPSS is installed in the IBM-folder in 'Program files'.

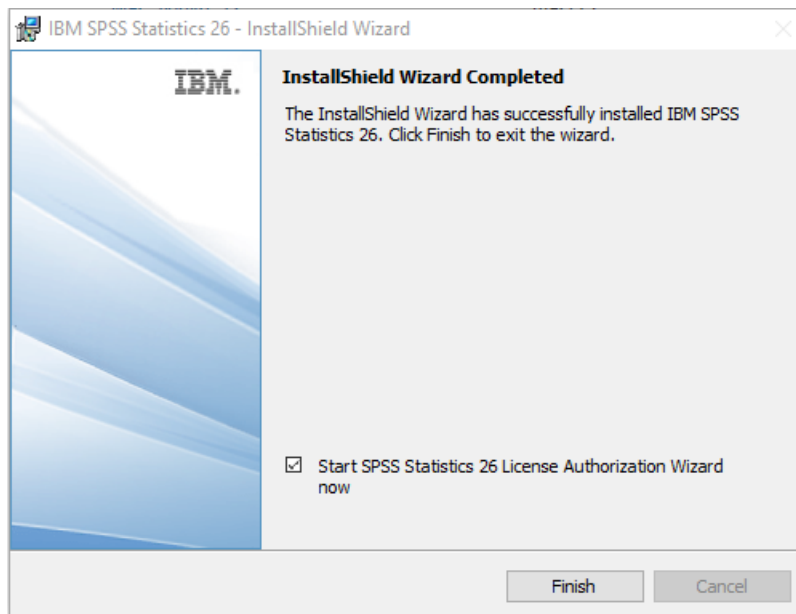
Press 'next' to accept your current installation folder.



- Finally, press 'Install' in order to start the installation.

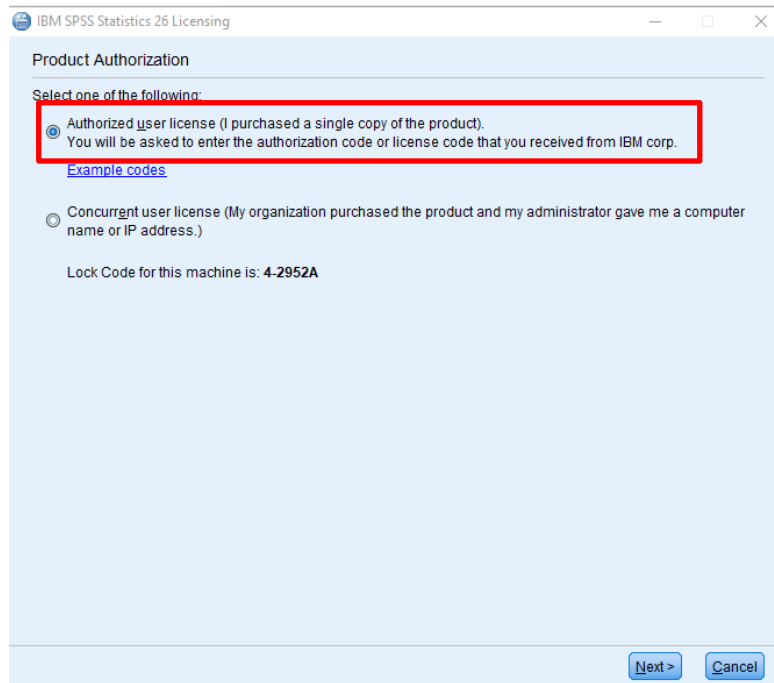


- Wait for the installation to finish installing. Press 'Finish' to launch the SPSS Statistics 26 License Authorization Wizard



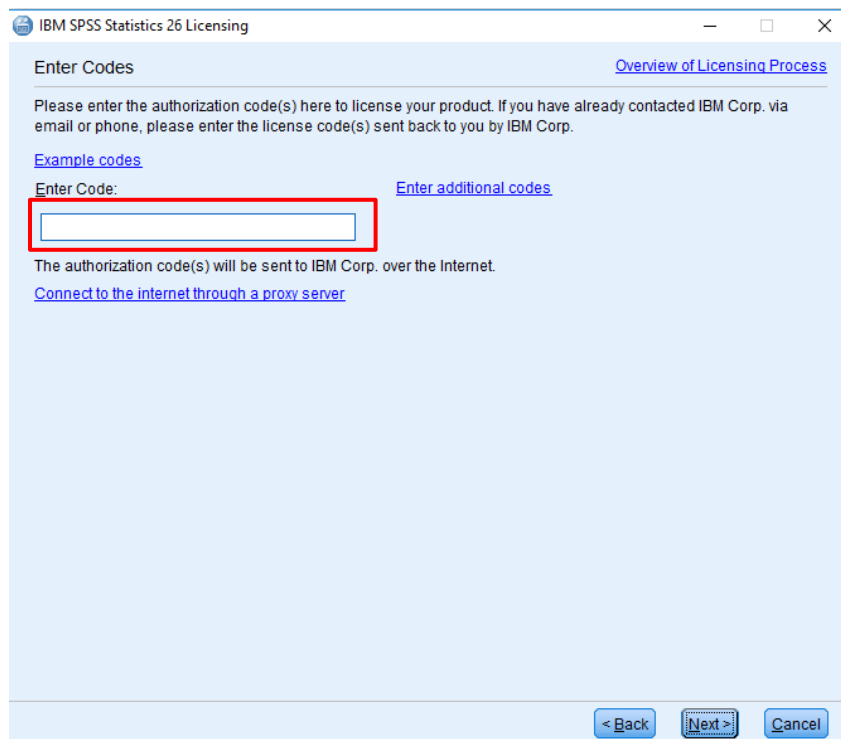
- Lastly, SPSS must be registered with the License. The Licensing Wizard opens shortly after completion.

Choose to license the product and press 'Next' to continue.



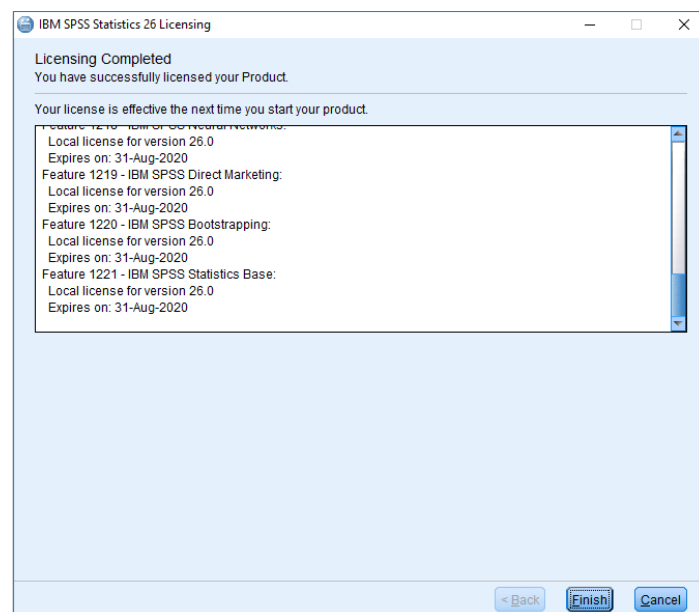
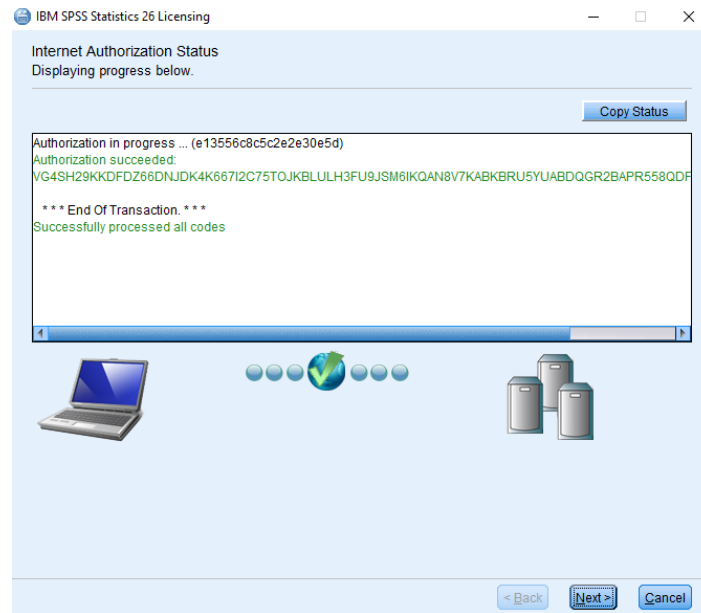
- Type in the license that you have received through email after your purchase.

Press 'Next' to continue.



- This should license the product. If done correctly an overview of you license will be shown. Press 'Next' to continue.

Finally, press 'Finish' in the next window to complete the registration and start using SPSS.



SPSS is now installed on your computer (Restart if asked to). If you experience any problems when installing or using the program, please contact the Analytics Group on analytics@au.dk

Enjoy the software!

THIS GUIDE HAS BEEN PRODUCED BY

ANALYTICS GROUP



Analytics Group, a division comprised of student instructors under AU IT, primarily offers support to researchers and employees.

Our field of competence is varied and covers questionnaire surveys, analyses and processing of collected data etc. AG also offers teaching assistance in a number of analytical resources such as SAS, SPSS and Excel by hosting courses organised by our student assistants. These courses are often an integrated part of the students' learning process regarding their specific academic area which ensures the coherence between these courses and the students' actual educational requirements.

In this respect, AG represents the main support division in matters of analytical software.

ADVANCED MULTIMEDIA GROUP



Advanced Multimedia Group is a division under AU IT supported by student instructors. Our primary objective is to convey knowledge to relevant user groups through manuals, courses and workshops.

Our course activities are mainly focused on MS Office, Adobe CS and CMS. Furthermore we engage in e-learning activities and auditive and visual communication of lectures and classes. AMG handles video assignments based on the recording, editing and distribution of lectures and we carry out a varied range of ad hoc assignments requested by employees.

In addition, AMG offers solutions regarding web development and we support students' and employees' daily use of typo3.

PLEASE ADDRESS QUESTIONS OR COMMENTS REGARDING THE CONTENTS OF THIS GUIDE TO

ANALYTICS@AU.DK